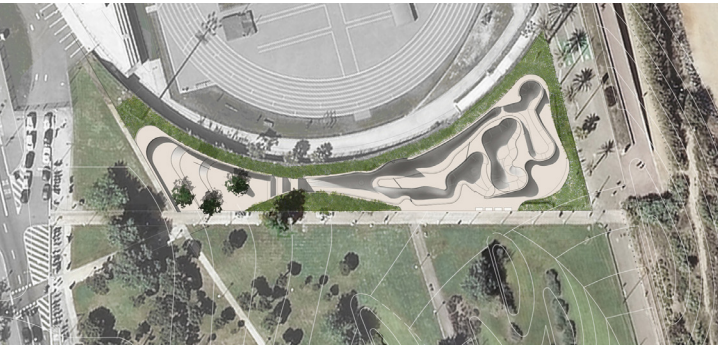


The Mar Bella (MB)

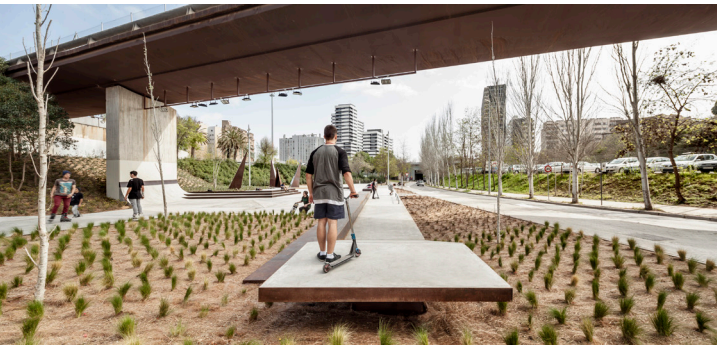


The Mar Bella Urban Sports Park (Poble Nou), is conceived as a multipurpose park. The intention is to create an artificial topography, a collection of dunes and pathways integrating with the existing ground conditions of Poble Nou Park. The project then adapts to the terrain and exploits the grade to facilitate skating from the city to the sea. Benches and bleachers are arranged on either side to reinforce the idea of the site as a meeting point and rest area not only for users, but also for passers by making their way towards the park or going to the beach.

The Les Corts Urban Sports Park (Les Corts), has been designed as a straightforward skate-plaza. The initial programme required a reproduction of various existing elements used for skate boarding around the city of Barcelona, known to all users, places like: the MACBA plaza, the platforms of Paralel or the raised curbttables of the Plaça dels Països Catalans. The project takes advantage of the limits of the site's ground conditions using the level changes and the banked retaining walls to accommodate the skate surfaces which are all connected to one another and employ a common language. The routes through the park are respected and the existing vegetation is allowed to encroach inwards.

The Nou Barris Urban Sports Park, is located on a covered section of the Ronda de Dalt. This project consists of the refurbishment of an old skate park which was only partially exploited. Over a long process of public consultation which involved working extensively with local users, a design that would best address their needs was achieved. The skatepark incorporates elements that are interconnected with one another and the surroundings, establishing a spatial continuity with the park where it's accommodated, and thus facilitating relationships between users of both the skatepark and the park.

Les Corts (LC)



Nou Barris (NB)

