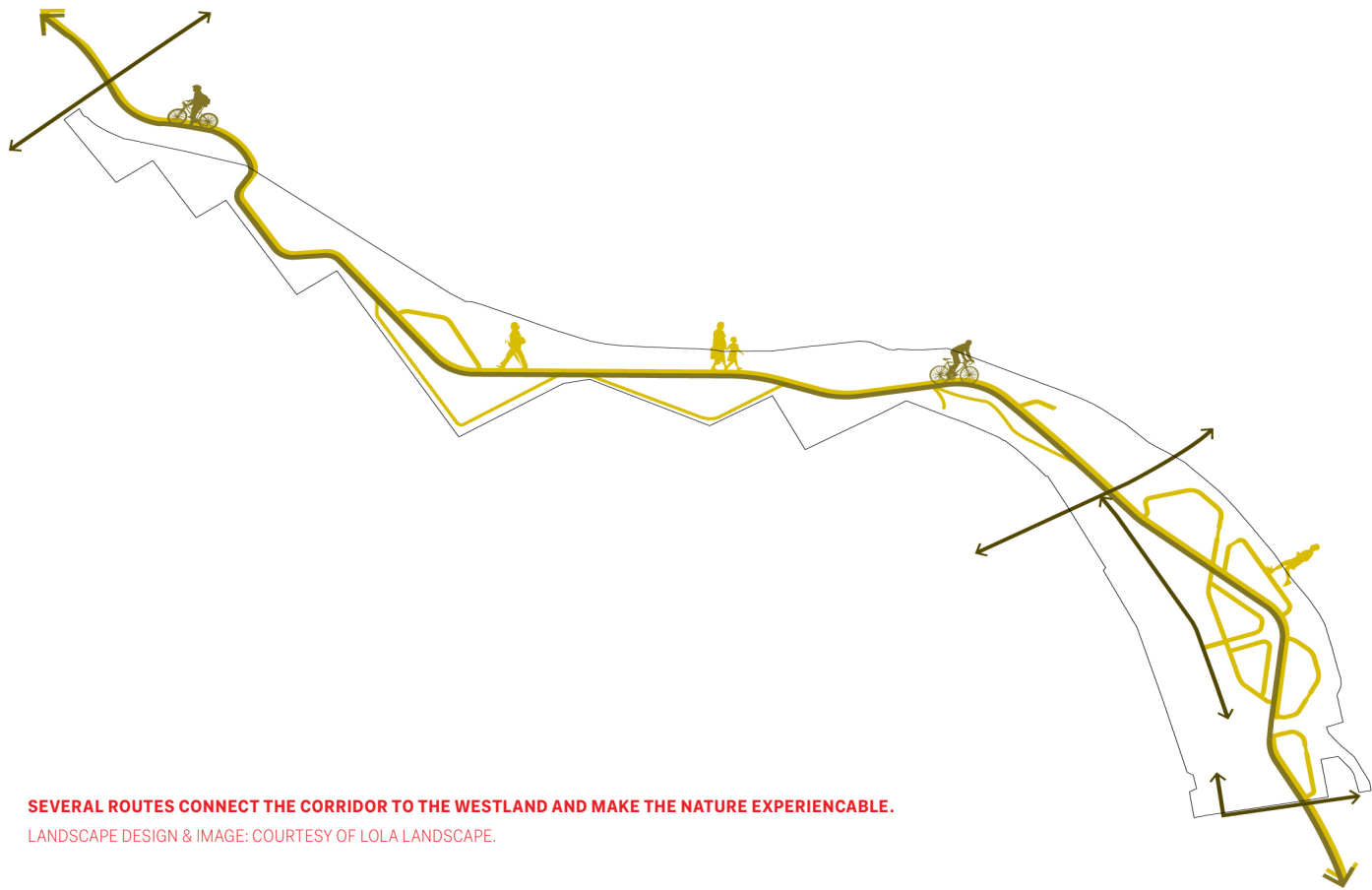
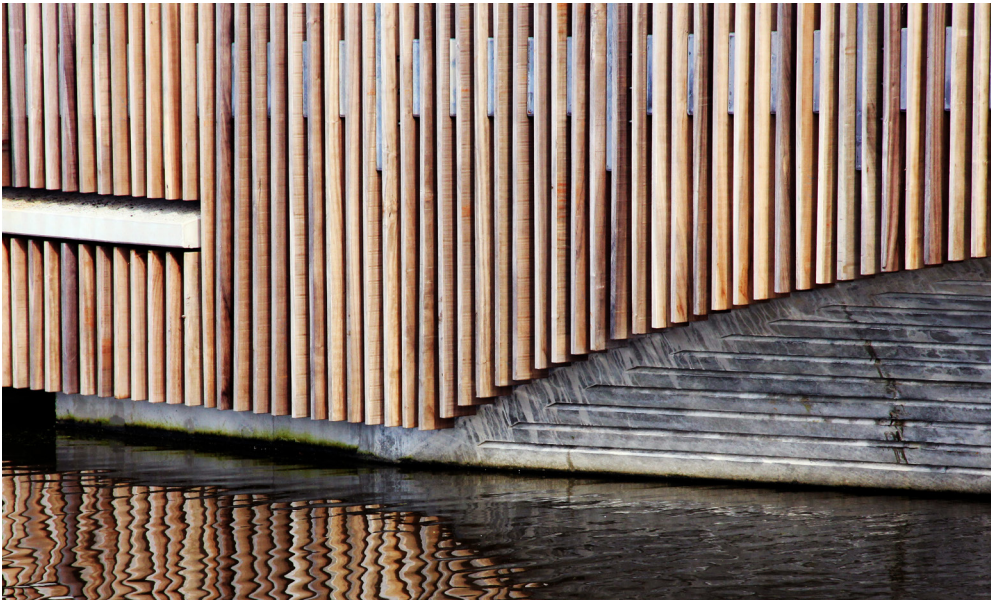


Within the space shortage of the Netherlands there's a continuous quest for living space. While urban areas are expanding, flora and fauna are under heavy pressure. NEXT created an eco-friendly bridge by designing a structure for both people and the animals. Besides designing a traffic route for cyclists, pedestrians and incidental destination traffic, NEXT architects has tapped into creating space for nature instead of reducing it. The Vlotwateringbridge sets a good example of how to make migration of different species possible through its build works and is part of the Nature Network Netherlands.

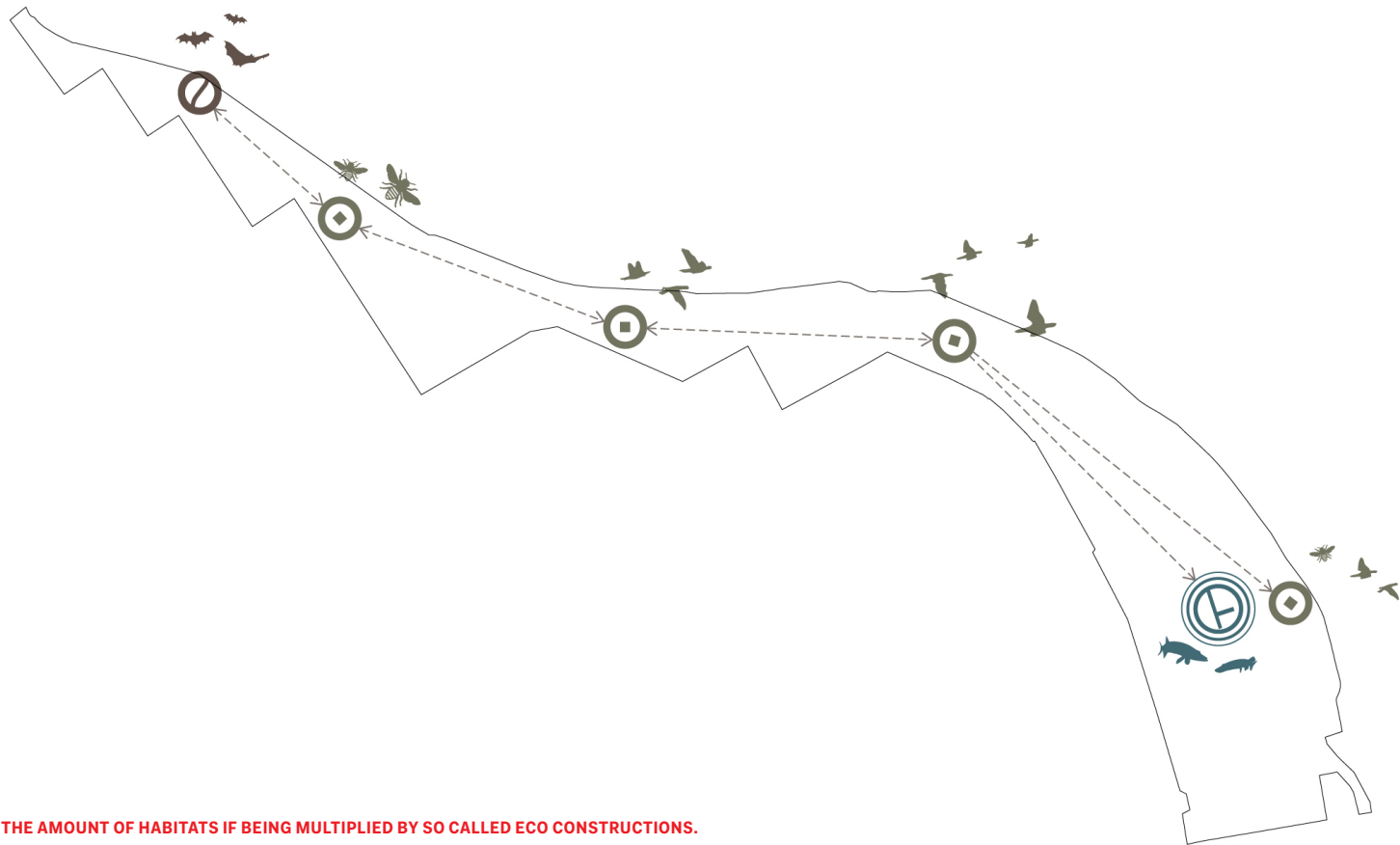
It has been exciting to connect two totally different worlds: the tough world of steel, concrete and contractors at one hand and the ecological world of indigenous wildlife.



SEVERAL ROUTES CONNECT THE CORRIDOR TO THE WESTLAND AND MAKE THE NATURE EXPERIENCABLE.  
LANDSCAPE DESIGN & IMAGE: COURTESY OF LOLA LANDSCAPE.



ACCESS GAPS TO WINTER ACCOMODATIONS FOR THE BATS



THE AMOUNT OF HABITATS IF BEING MULTIPLIED BY SO CALLED ECO CONSTRUCTIONS.  
LANDSCAPE DESIGN & IMAGE: COURTESY OF LOLA LANDSCAPE.