

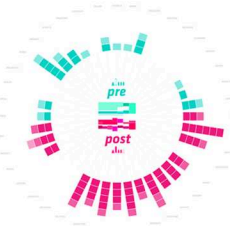


MARCELINE

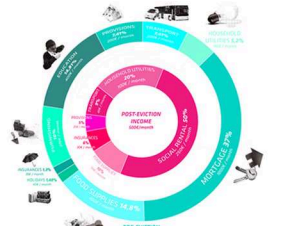


House Marceline Model

Pre-eviction
Post-eviction



Capitals



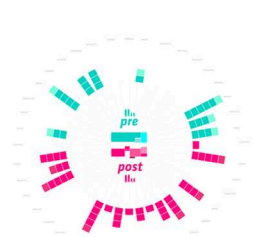
Economy

LAMINE

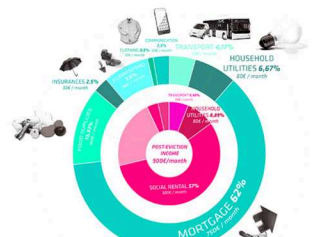


House Lamine Model

Pre-eviction
Post-eviction

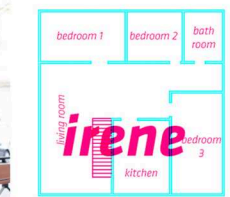


Capitals



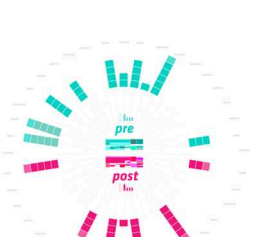
Economy

IRENE

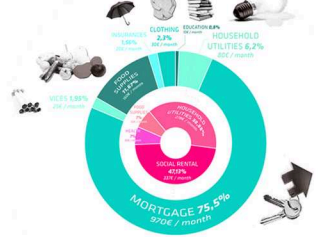


House Irene Model

Pre-eviction
Post-eviction



Capitals



Economy



Madrid has an invisible 5° tower of 11.340.000 square meters of evicted houses, households, and domesticities in the public space.