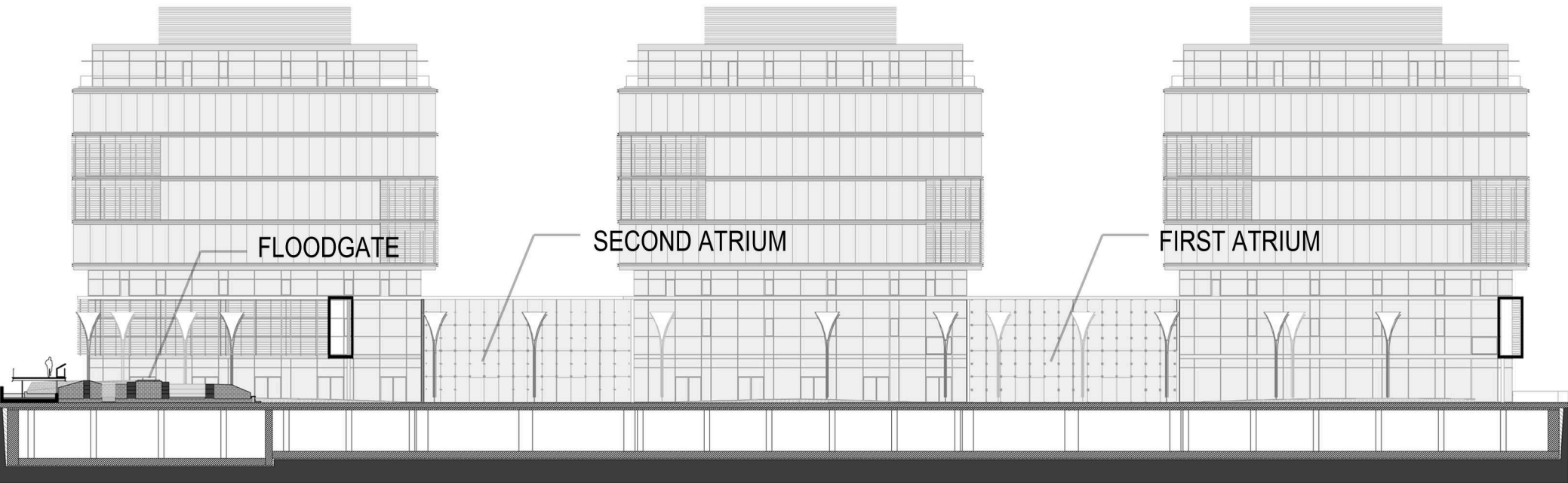


SECTION AND GROUND PLAN OF THE PUBLIC SPACE ( FLOODGATE RUIN AND ATRIUMS ) | EXTERIOR SCULPTURE AND EXPOSITION



The entire weir with all fortifications nearby, approx. 400 sq. m. was proposed to be moved and exposed on the urban plaza offered by the project strategy.

The project places the recovered floodgate in a public space to showcase its true value, along with info panels and a viewing platform. This will allow visitors to discover the significance of the floodgate and learn about the intricate process behind the project.

This particular example of an environmental control device is the proper symbol for a technological innovative city. It generates a fragment of an open air museum, but also it enhances the whole atmosphere of the pedestrian gallery and plaza, a surprise with all the artefacts, with the controlled layer of water and the little exhibition dedicated to it and to the Timisoara's modern history.