

## INTERVENTION'S DESCRIPTION

The gloomy environment **BETWEEN BLOCKS** becomes a place with identity for the neighbourhood and is renovated as a public and sociable space.

**CARPET** in the daily imaginary symbolizes a place of encounter, of greeting, of coexistence; Which is quickly taken over by the community, who identifies and becomes identified.

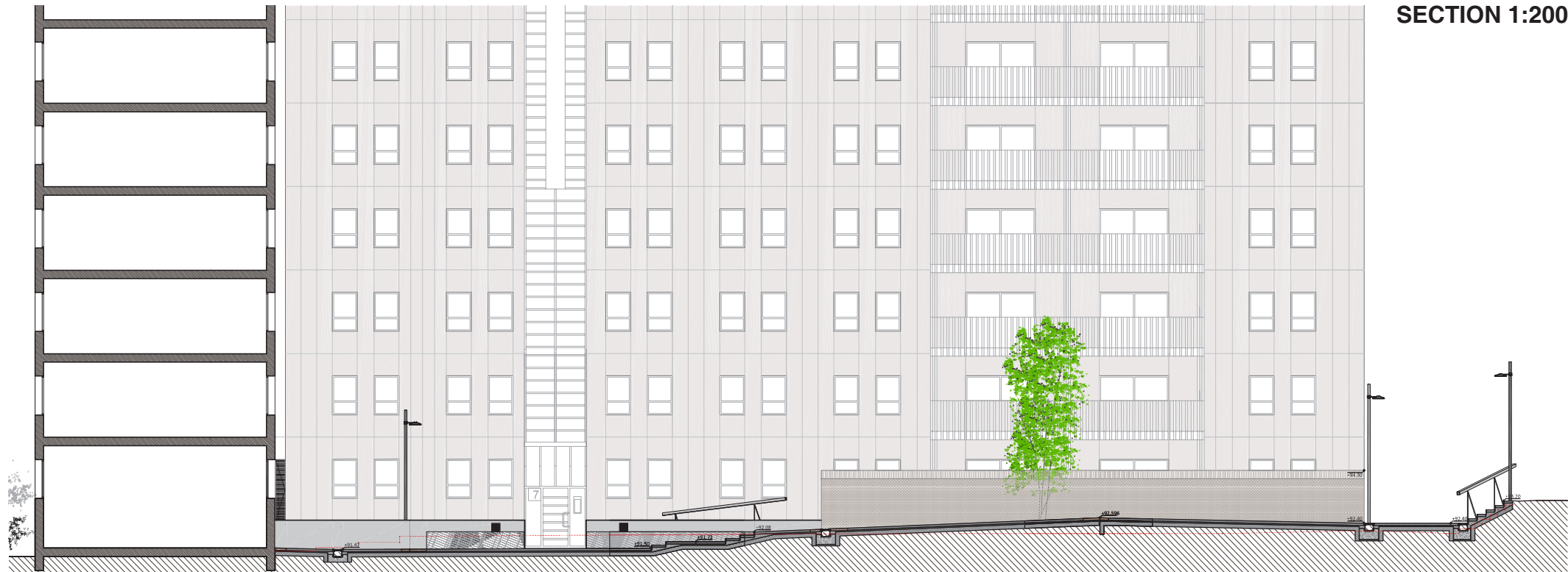
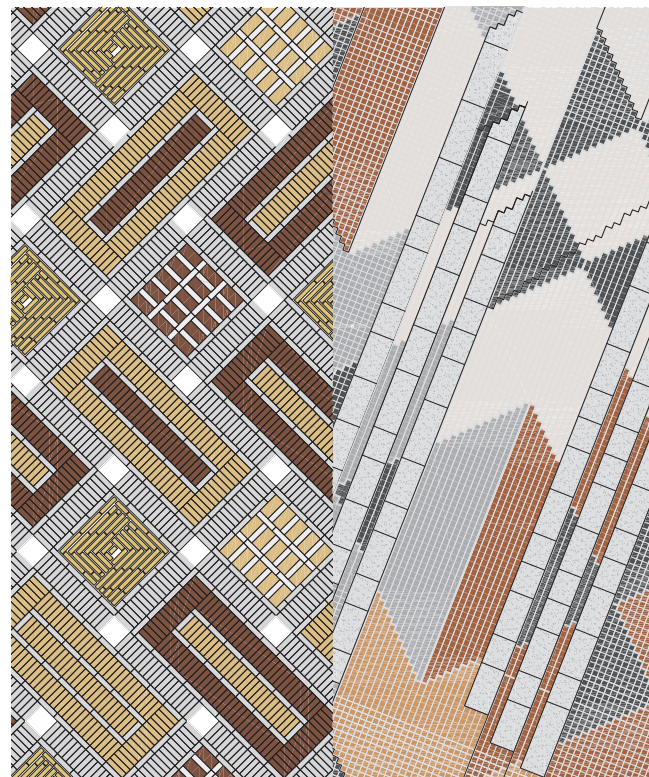
The carpets of the different cultures that cohabit in the neighbourhood intertwine to form a single cultural mosaic. The square is humanized.

As a collective strategy traditional materials are proposed, low-tech and inexpensive. An investment towards workmanship is conveyed in a period of a severe economic recession.

The personal work increases the self-esteem of the workers who execute the square. They identify in both an individual and collective way through the job. They become main characters and sometimes even artists of a **PRECISE CRAFTSMANSHIP** that links the plastic requirements with the complex geometry of the planes.

**THE INEXISTING, SUDDENLY EXISTS** and it is identified beyond its limits, but the most beautiful view point is the one visible from the homes of the **HUGE BLOCKS** that surround it. The neighbours embrace it from their windows. When looking out, a new landscape appears and they proudly enjoy the collective property.

Their home is improved thanks to this new landscape.



SECTION 1:200