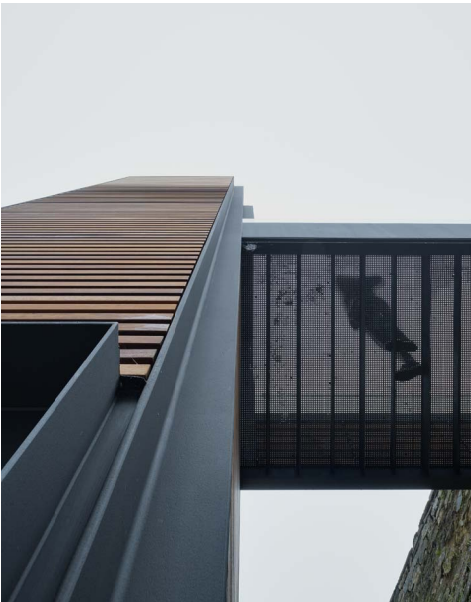
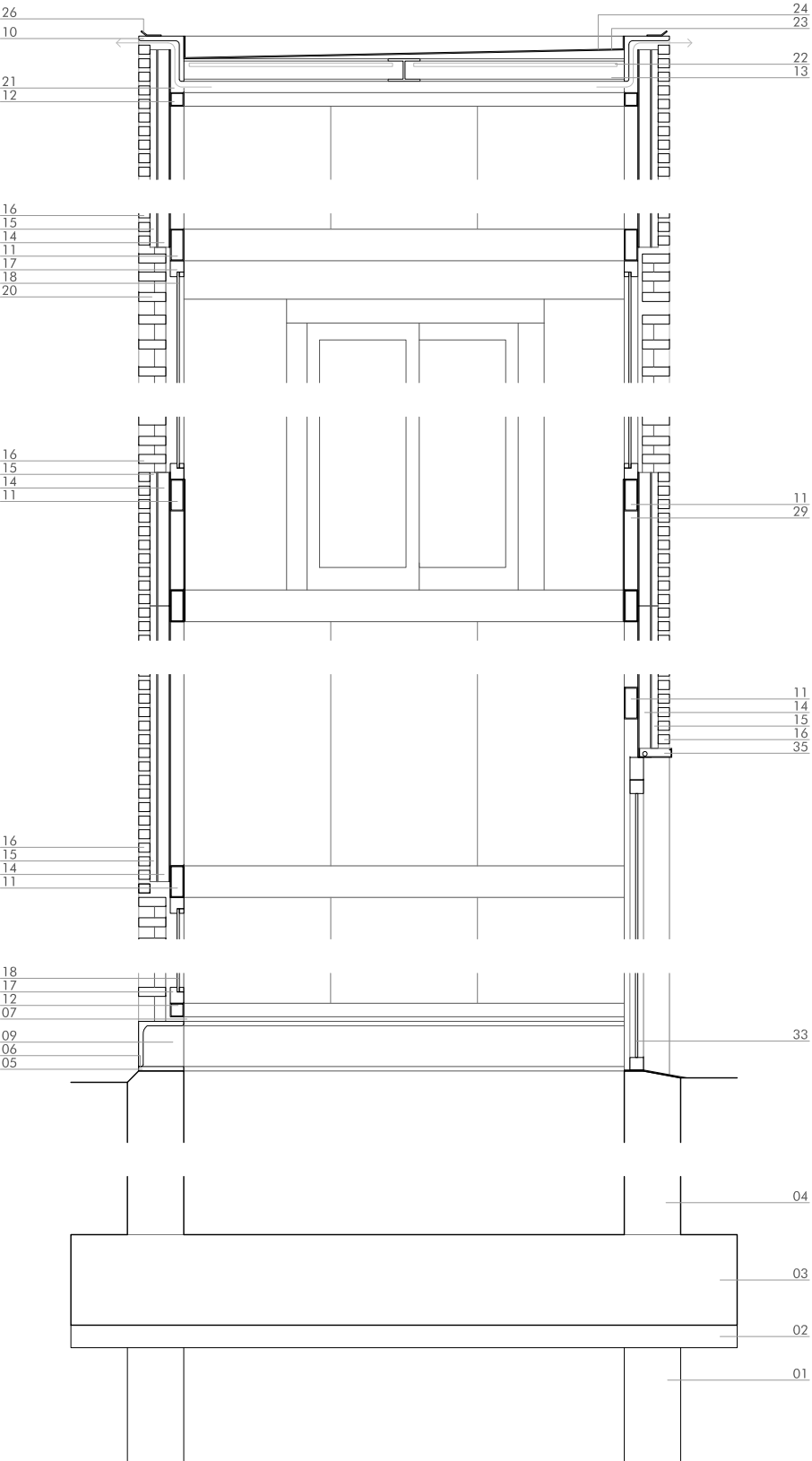


The resulting box and gateway connection to the parapet are solved with steel structure. The vertical body is solved internally with folded sheet steel and coated externally with iroko wood strips, which are separated in the stops forming a lattice that allows a glimpse of the outside. The pavement of the gateway connection is made with a folded perforated plate that reinforces the sense of independence between the elevator body and the wall, and solves water drainage and the need for a non-slip surface. It has sought a high degree of prefabrication in the design and layout of each of the structural elements of the project. Over time it is expected that the wood acquires a gray color that fits naturally to the historic masonry wall and its living patina.



J242  
CONSTRUCTION OF AN ELEVATOR TO ACCESS TO THE PARAPET OF THE ROMAN WALLS OF LUGO  
CONSTRUCCIÓN DE UN ASCENSOR PARA ACCEDER AL ADARVE DE LA MURALLA ROMANA DE LUGO  
ANTONIO PERNAS VARELA [LUGO, ESPAÑA]



CONSTRUCTIVE SECTION 1:30

- TRENCH AND FOUNDATION
- 01 REINFORCED CONCRETE MICROPILES
  - 02 BLINDING CONCRETE
  - 03 REINFORCED CONCRETE FOOTING
  - 04 WATERPROOFED REINFORCED CONCRETE WALL 25 cm
  - 05 ANCHOR PLATE
  - 06 POLYURETHANE SILICONE SEALANT
  - 07 RUBBER WATERPROOFING PAINT

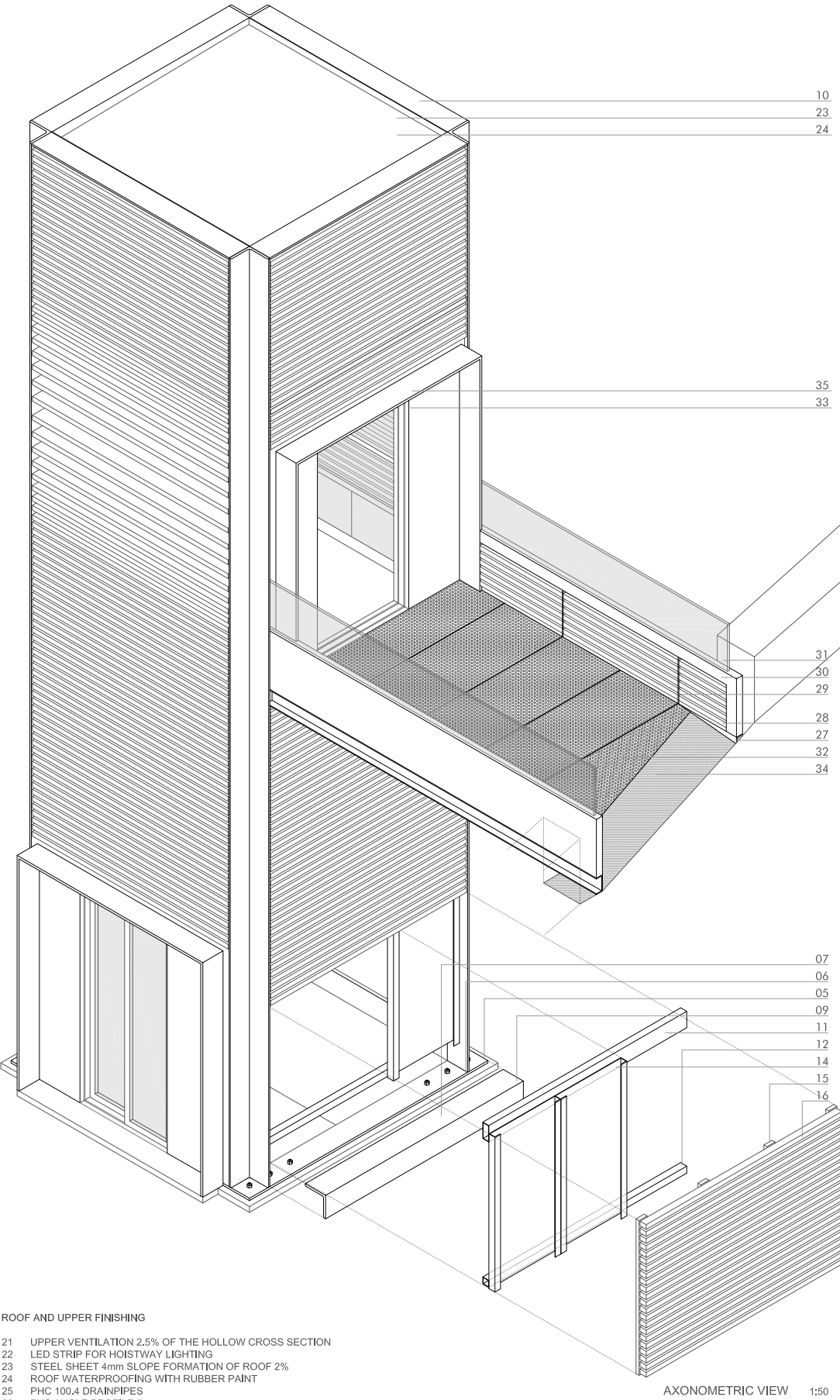
- STEEL STRUCTURE
- 08 PILLAR L.200.16
  - 09 LOWER FINISHING PROFILE L.200.16
  - 10 UPPER FINISHING PROFILE L.200.16
  - 11 TUBE RHS 140.60.4
  - 12 TUBE SHS 60.4
  - 13 TWO CROSS HEB 100. STRUCTURE FOR SUPPORT 7 HOOKS

- ENCLOSURE TYPE
- 14 STEEL SHEET 2mm
  - 15 SOLID CEDAR/IROKO WOODEN BATTEN [BRACKET] 3x8 cm TEAK OIL FINISHING
  - 16 SOLID CEDAR/IROKO WOODEN SLAT [FINISHING] 5x4 cm [TEAK OIL FINISHING]
  - 35 STAINLESS STEEL SHEET FOLDED AS FINISHING FOR RAINWATER HARVESTING

- GLASS ENCLOSURE
- 17 FIXED JOINERY OF SOLID CEDAR/IROKO WOODEN, TEAK OIL FINISHING
  - 18 SINGLE GLASS LAMINATED 5.5
  - 19 JOINERY OF SOLID CEDAR/IROKO WOODEN. [SUPPORT OF SLATS]] [TEAK OIL FINISHING]
  - 20 SOLID CEDAR/IROKO WOODEN SLAT [FINISH] 14X4 cm [TEAK OIL FINISHING]

- ROOF AND UPPER FINISHING
- 21 UPPER VENTILATION 2.5% OF THE HOLLOW CROSS SECTION
  - 22 LED STRIP FOR HOISTWAY LIGHTING
  - 23 STEEL SHEET 4mm SLOPE FORMATION OF ROOF 2%
  - 24 ROOF WATERPROOFING WITH RUBBER PAINT
  - 25 PHC 100.4 DRAINPIPES
  - 26 PVC ANGLE PROFILE 5mm

- GANGWAY
- 27 UPN PROFILE 140
  - 28 SOLID CEDAR/IROKO WOODEN BATTEN 4x5'4 cm
  - 29 T PROFILE 60
  - 30 STEEL REED
  - 31 SINGLE LAMINATED GLASS 10.10
  - 32 FORMING FOLDED SHEET TRAYS ø=5mm PERFORATIONS ø 8mm en GALVANIZED STEEL
  - 33 MATT STAINLESS STEEL TELESCOPIC DOORS AND GLASS
  - 34 GRANITE BEAM



AXONOMETRIC VIEW 1:50