

FRONT MARÍTIM DE MONTGAT 02

Àmbit de la Torre Guaita

author_Cristina Sáez Talán_architect AMB



PURPOSE AND DESCRIPTION OF THE WORKS

The project proposes the redesign of the section of the seafront promenade between Montgat Hill and the fishermen's market.

The starting point was to unify city planning criteria for the section, highlighting its uniqueness within the Montgat seafront. As this was the only section of the Montgat coast that was trapped between two closed boundaries, the recovery of the maximum usable section of the public space was set as a priority. For this reason, the alignment was recovered and the old Tenyidor building was demolished, according to ADIF property boundaries, gaining width for the promenade.

In the section in which the Guaita Tower is located, stairs and ramps of the passage under the railtracks that connect the historic city centre and the beach were placed. This point represents an important connection between the Barques Beach and Montgat town centre.

The area for works is 1720 m2.

Les principals línies d'actuació es basen en ampliar la secció del passeig per permetre la convivència bicicleta/vianant a una amplada lliure de 6 metres, la implantació de l'enllumenat LED, l'ordenació de serveis urbans i la transformació del front edificat.

The main lines of action are based on widening the section of the promenade to six metres to facilitate the coexistence of bicycles and pedestrians, the installation of LED lighting, the organisation of city services and the transformation of the built seafront.

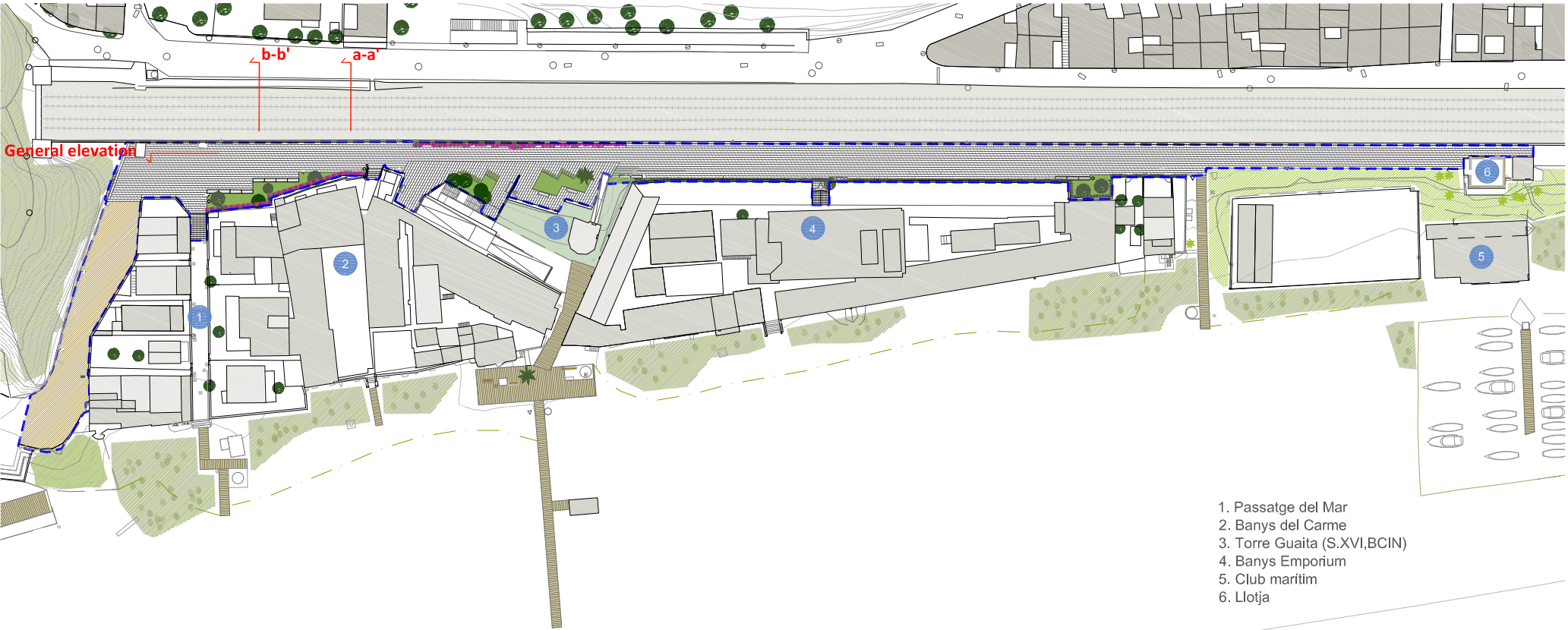
The paving system employed is based on large-scale prefabricated slabs that follow the longitudinal orientation of the linear items that are characteristic of the Maresme seafront: the N-II road, the railway tracks and the sea-land border.

The renovation of the fencing along the build frontage is essential in order to create a uniform façade. It is shaped from L profiles at different heights to be able to open up sea views from the promenade.

The spacing of these profile sections let the properties be hidden and privatised from a short distance, as well as allowing for transparency from the other side of the railtracks, transforming the seaside promenade into a scenic viewpoint toward the beach.

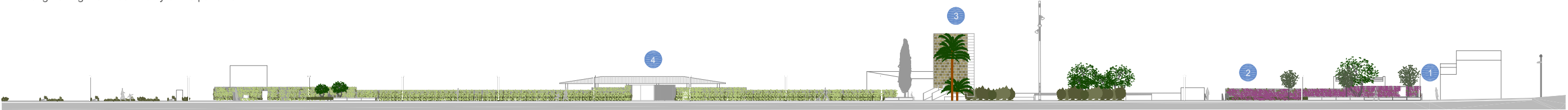
This new façade incorporates three widenings in which bushes and aromatic plants are placed that are resistant to salt water.

As urban furniture, the works incorporate several lines of benches, strengthening the directionality of the pavement.

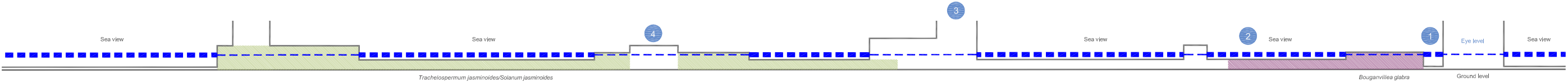


- 1. Passatge del Mar
- 2. Banys del Carme
- 3. Torre Guaita (S.XVI,BCIN)
- 4. Banys Emporium
- 5. Club marítim
- 6. Llotja

General plan of works



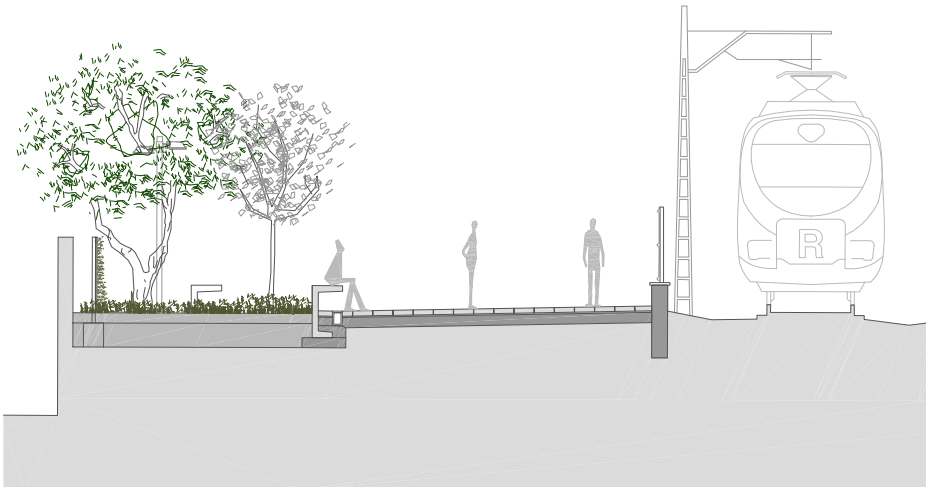
General elevation plan of works



Sea view elevation diagram



Cross-section a-a'



Cross-section b-b'



General view