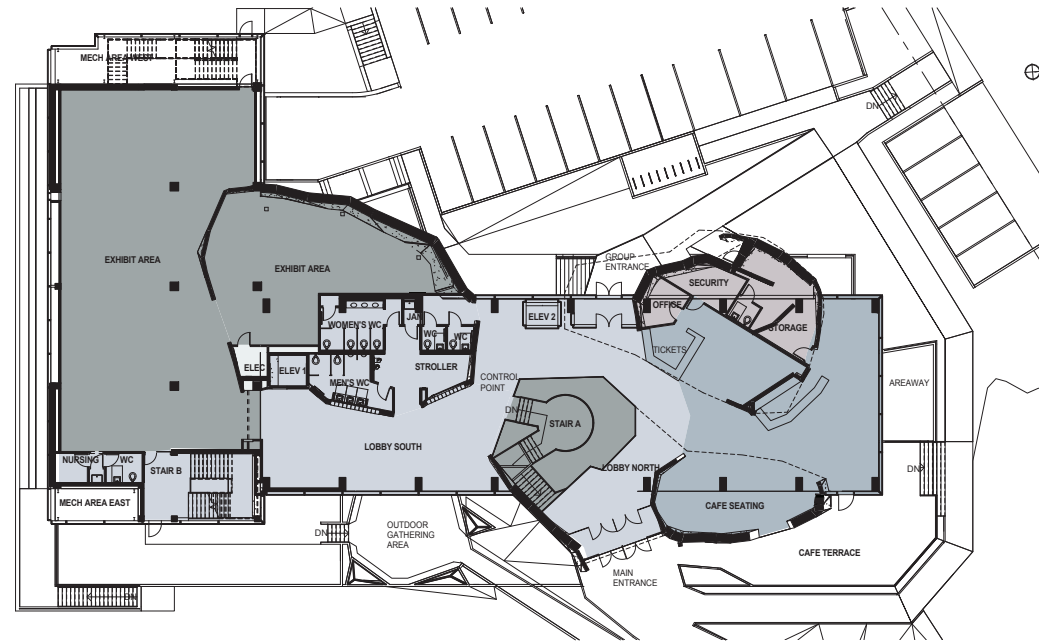
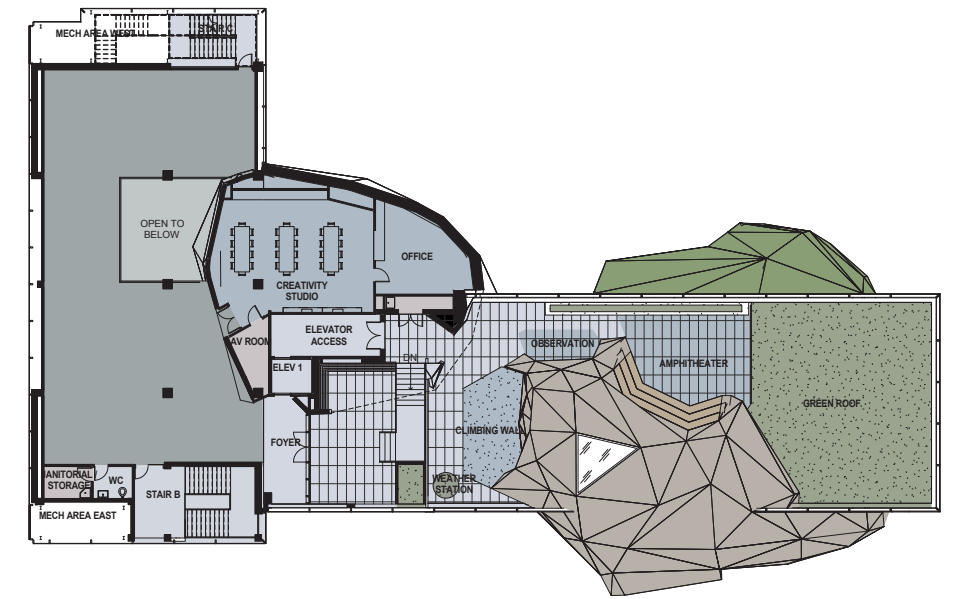


UNDERGROUND LEVEL FLOOR PLAN

© LHSA+DP



GROUND LEVEL FLOOR PLAN



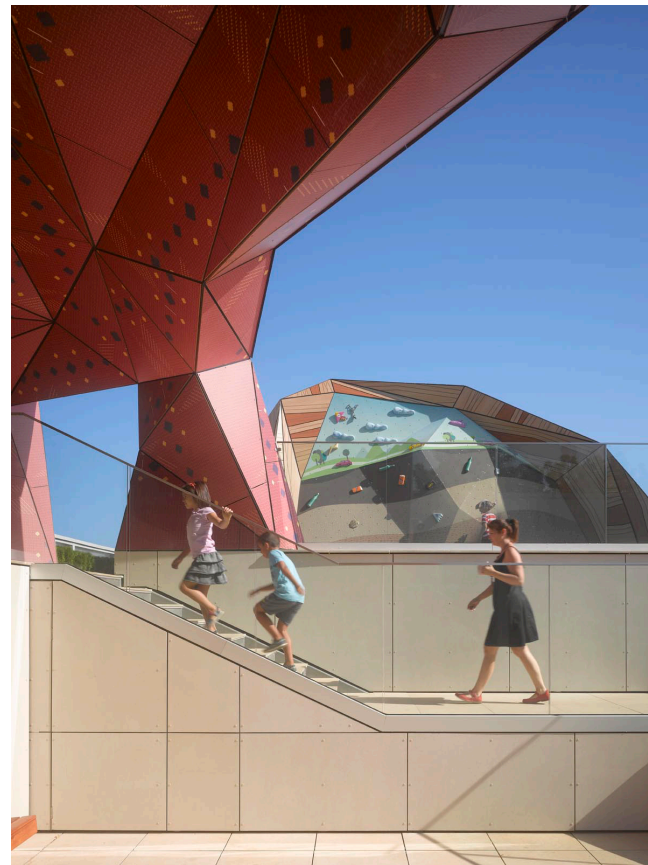
UPPER LEVEL FLOOR PLAN

© LHSA+DP



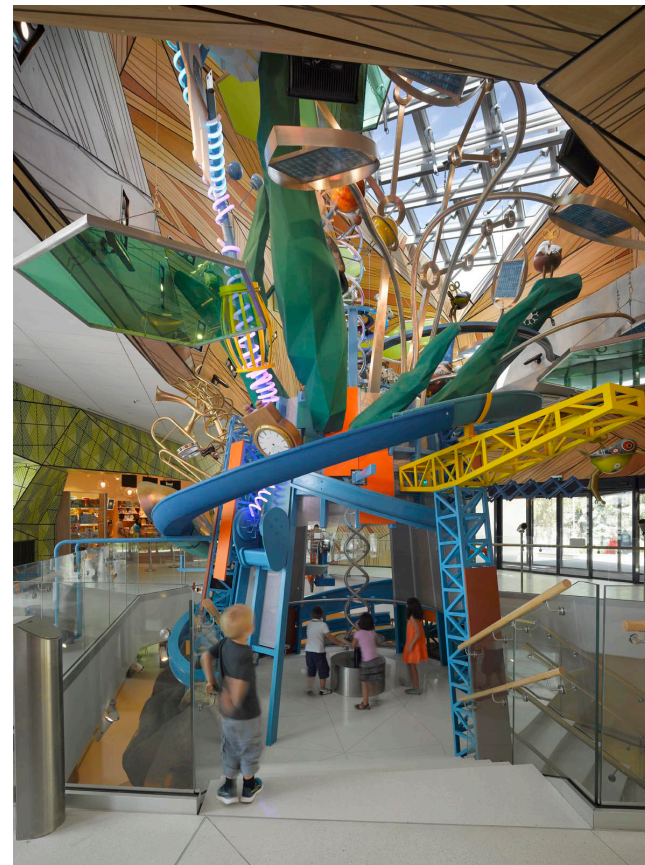
EAST ELEVATION

© LHSA+DP



WEST ELEVATION

© LHSA+DP



© Roland Halbe

MUZEIKO AMERICA FOR BULGARIA CHILDREN'S MUSEUM N# J124

The disused, run-down educational site has once again become a focus of activity for the neighborhood with not only greater educational benefits, but with social and economic influence as well. The construction began at Dec 2013 and took 18 months. The museum opened on November 1st , 2015.

