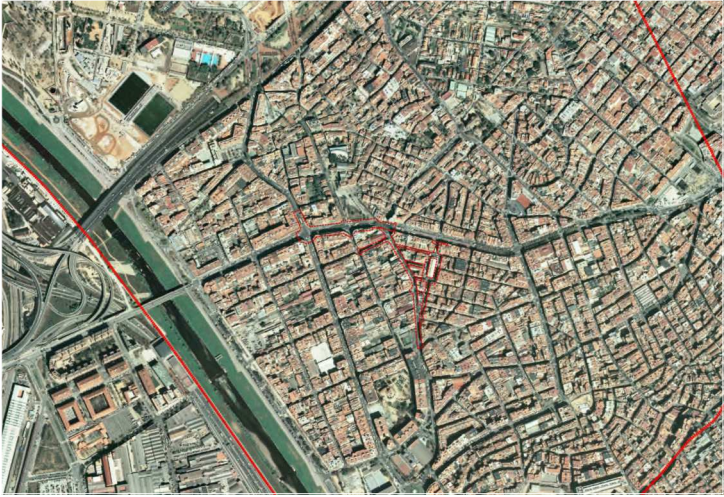


TECHNICAL SHEET

Project Remodelling of the streets in the central shopping district	Developer Àrea Metropolitana de Barcelona Ayuntamiento de Santa Coloma de Gramenet Diputació de Barcelona
Location Santa Coloma de Gramenet, Barcelona / Spain	
Area 20.181 m ²	Collaborators Francesc Germà (industrial engineer AMB), Catalina Montserrat (agronomist AMB), Joan Roca (civil engineer - AMB), Ainhoa Martínez, (architect - AMB), Jordi Bardolet (agriculturalist engineer AMB), Irene Antillach (scholarship assistant - AMB) Martí Cabestany (structures, architect)
End of work date November 2014	
Authors and Project Management Claudi Aguiló Riu (architect - AMB) Eva Pagés Aregall (architect - AMB) Jordi Larruy (civil engineer - AMB)	Photographer Martí Llorens
Contractor Dragados S.A.	

LOCATION IN THE CITY



CONDITION PRIOR TO WORKS

The group of streets involved in the works are located in a commercial and residential area of the Centre neighbourhood, generally with ground floors with merchants, with a dominant presence of and influence from the Sagarra Market, along with a street market on Mondays.

The original situation had narrow streets with vehicle traffic and street parking, narrow pavements lined with trees in poor condition, very little space and road lighting. Vehicles occupied an excessive area of the urban space, limiting pedestrian movement. The street paving was in poor condition, worsening at the points with steepest slopes.

The sewage network was precarious, with high levels of surface runoff that was collected through irregularly-spaced interceptors. The street sewers needed to be cleaned, reinforced and extended. The low voltage electric grid and the telecommunications network had sections of overhead wires. The public lighting was chaotic and diverse, formed by light points on columns or on façades at excessive heights with a large distance between them, using high-pressure sodium vapour lamps with high power.

PURPOSE OF THE WORKS

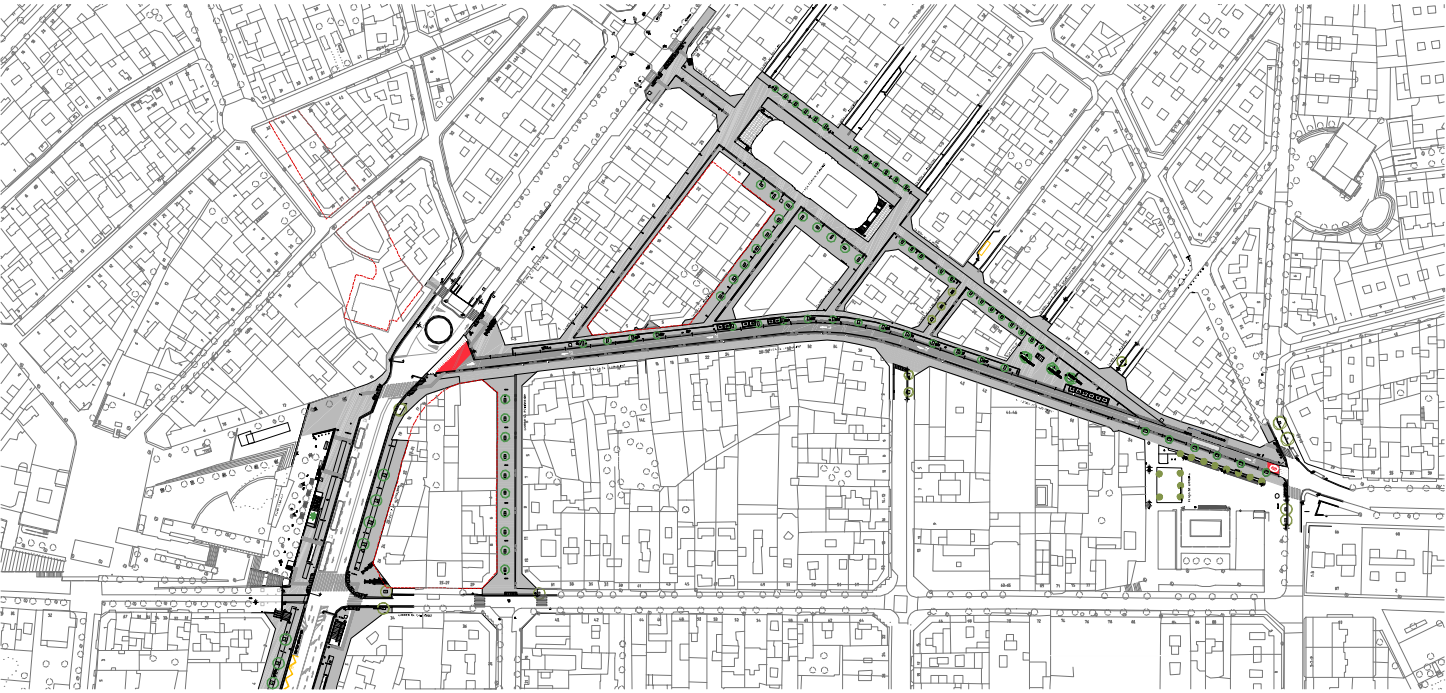
The project started with the City Council's commission to maximise commerce as an engine in the city centre and as the consequence of remodelling the old Sagarra Market. The intervention was executed with overall criteria for the entire neighbourhood, creating a large priority area for pedestrians, restricting vehicular traffic and defining specific loading / unloading time ranges.

The study of the different sections let the centre's operating quality be increased, improving mobility and accessibility on slopes, as well as the services, with the burying of the overhead wires and improvement of the sewers.

We broke streets down into three categories. The Passeig Llorenç Serra, with high traffic flow, kept its boulevard section, with wide pavements that laid out street furniture, lighting, trees and services into a central strip. The Avinguda de la Generalitat is part of this pedestrian island, with inverted priority (semi-pedestrian), although buses still travel on the street on a differentiated strip of asphalt. Finally, the streets surrounding the market were transformed into a single platform and, adapting their use and width, lines of trees and benches could be included.



The site prior the intervention



General plan of the intervention



View of plaça Manelic with the sculpture of the theater character which gives the square its name



View with Manelic sculpture



View of carrer dels Sagarra



View of plaça Ferran Sagarra with mercat Sagarra



View of passeig Llorenç Serra