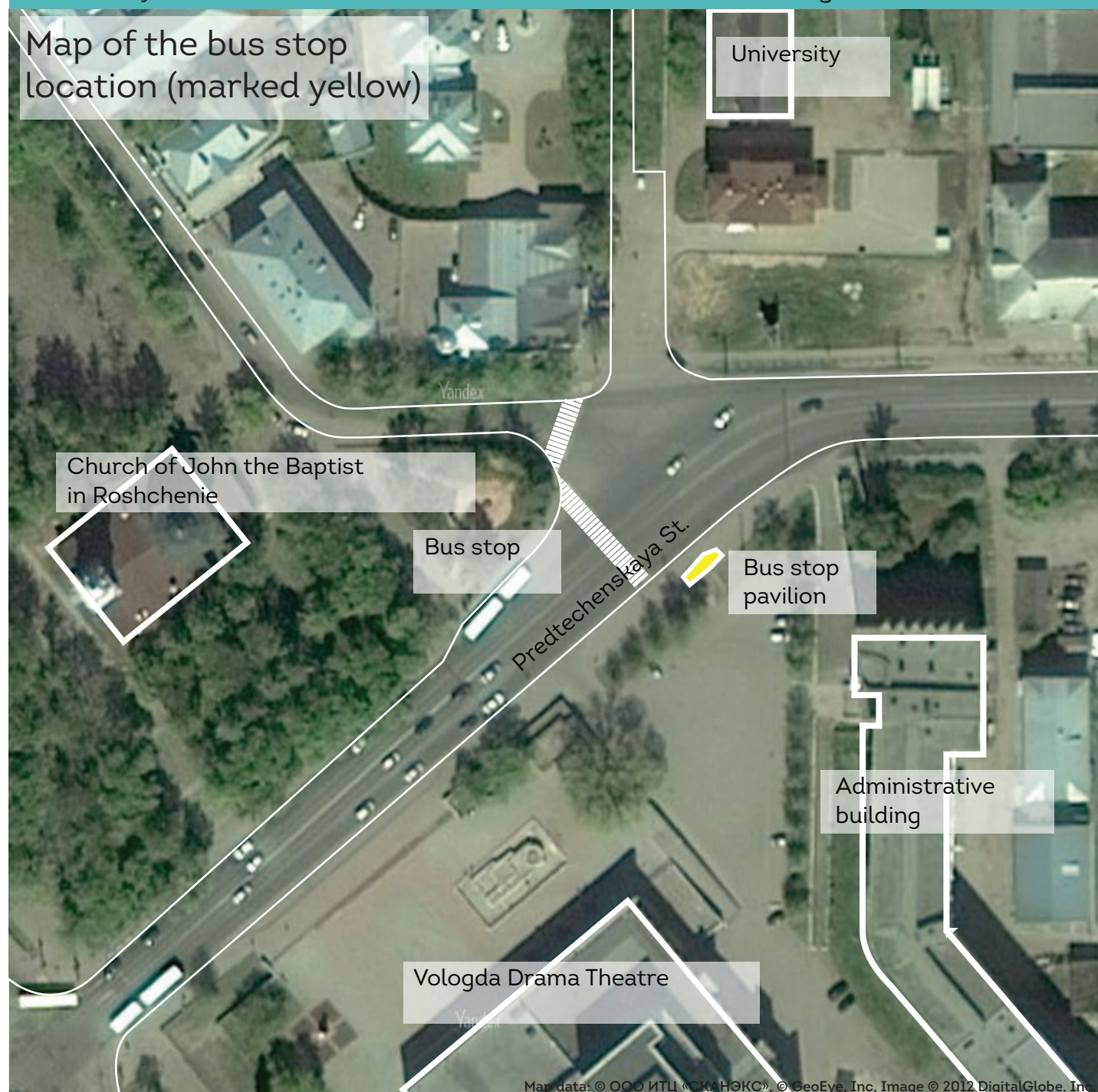




## CITY CENTRE LOCATION WITH HEAVY PASSENGER TRAFFIC

The bus stop where the new pavilion was installed is situated in the city center and is named after the Drama Theatre – the largest theatre in Vologda situated just nearby. Not only the theatre, but a large university campus, administrative block and the central square are situated close to the site, so quite many people always gather there at once. The whole block was built up in Soviet Union modernism style with the theatre as the most remarkable building.



# BUS STOP "DRAMA THEATRE"

Vologda, Russia

2014



## PUBLIC TRANSPORT CRISIS

At the year 2014 the city of Vologda faced a public transport crisis. The inconsistency of passenger carriers led to frequent schedule disruptions. Moreover, quite many of the old bus stop pavilions were demolished as a result of changes in legislation, and at that time there was even no shelter for citizens to suffer from the rain while waiting for the bus to come. The leftover bus stops suffered from vandalism.

The bus stop site at the time the project started



## PARTICIPATORY DESIGN AS AN ALTERNATIVE

The true aim of the project was to show that people can actually affect the process of city development and that they actually have the voice in a joint decision-making process. The "Drama Theatre" bus stop became not only a symbol of new wooden architecture in Vologda but also a true symbol of participation in the development of which local residents were involved on a par with the municipal authorities and local businessmen.

Photograph of the finished work

