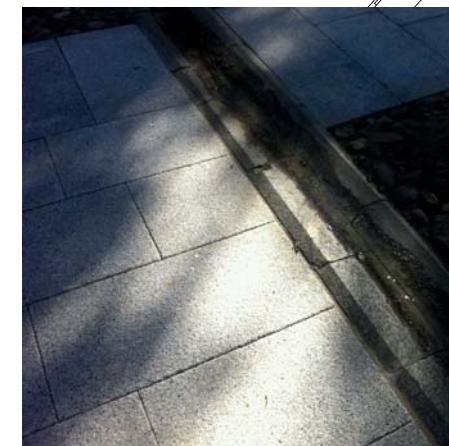
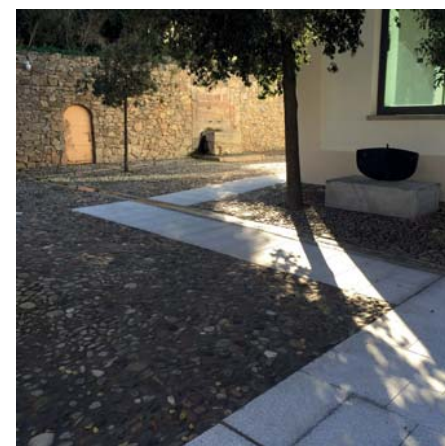
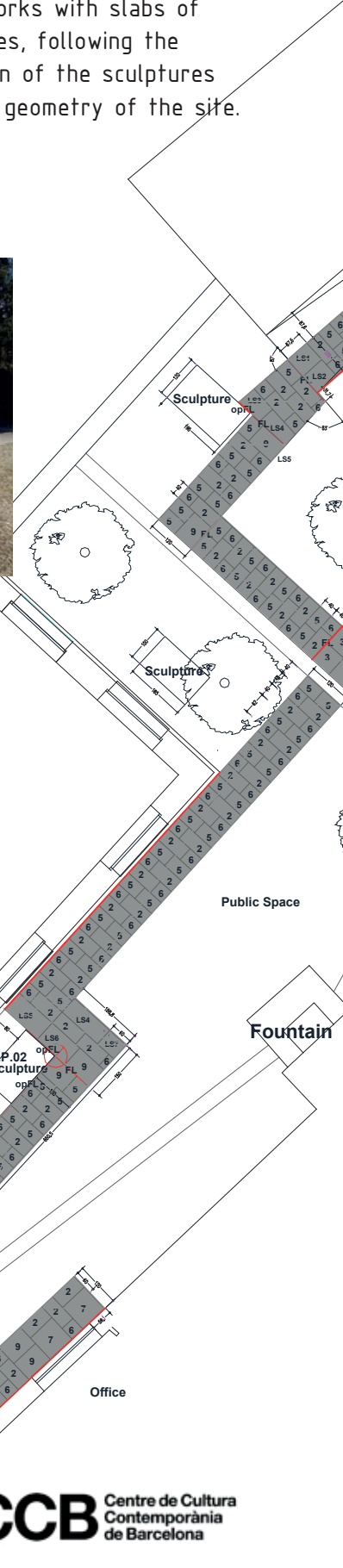
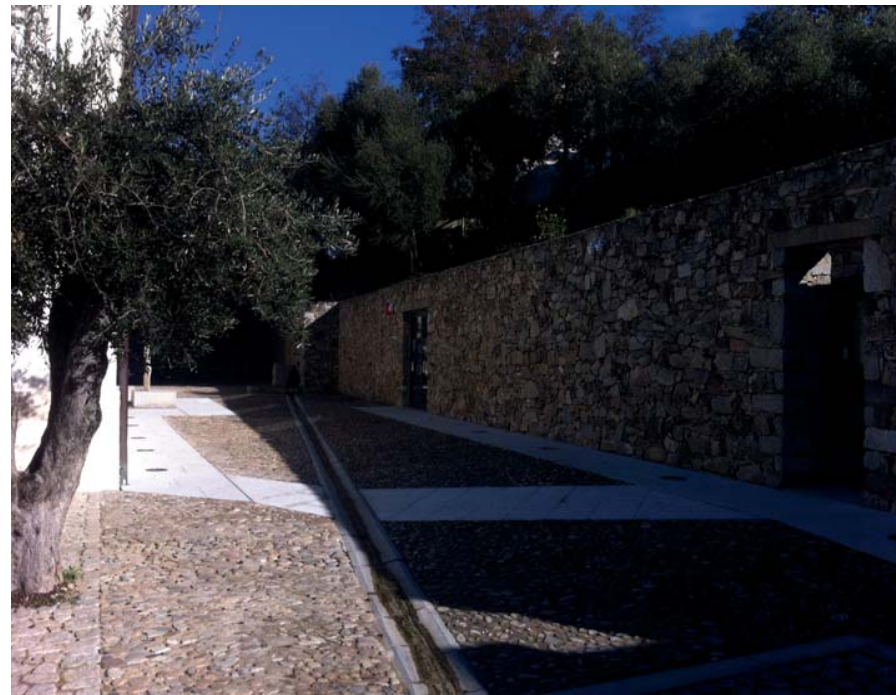


PHOTO/PROJECT

MAIN PHASE OF WORK

A project of new flooring in the public space around Nivola museum.

A new path of Sardinian granite, which seems to lie like a rug, links buildings with the surrounding sculptures and nature. The intervention works with slabs of variable modules, following the original location of the sculptures and the space geometry of the site.



"old washhouse" exhibition hall A

Fountain

Office

† 0 3



NIVOLA MUSEUM/CULTURAL AVAILABLE SPACES

European Prize for Urban Public Space 2016

CCCB Centre de Cultura Contemporània de Barcelona