

DAKAKKER



The Dakakker is the largest rooftop farm in Europe, an unique experiment that tests the potential of urban agriculture. The products are sold to local bars and restaurants.

OP HET DAK



'On the Roof' is a rooftop bistro that uses the harvest of the Dakakker to serve fresh and organic meals for lunch while enjoying a skyline view. ZUS created an entrepreneur friendly environment by renovating and assessing the commercial value of the rooftop pavilion. Nowadays local entrepreneur Valerie Kuster runs the rooftop bistro independently.

BIERGARTEN



Behind the Schiebblock on a deserted car park the Biergarten was created. With simple means, there is now an oasis of peace and sun amidst the impressive skyline of Weena. This place has given Schiebblock a clear address to the Delftsehof.

ANNABEL



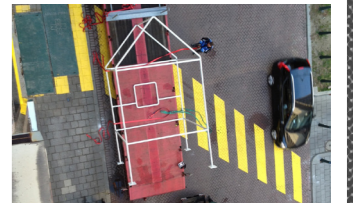
Concert venue, grand cafe and restaurant Annabel and adjacent underground nightclub Transportbedrijf are one of the spin offs from the initial Test Site interventions. They are located in one of the formerly neglected buildings of the Delftsehof. Local entrepreneur Aziz Yagoub asked ZUS to design this new Rotterdam nightspot.

CS2



The Delftse square connects Test Site Rotterdam and Rotterdam Central Station, an area of the Rotterdam Central District also affected by the economical crisis. ZUS, together with other local entrepreneurs, made a proposal in which Permanent Temporality applies. It is an illustration of the snowball effect and continuity of bottom-up initiatives.

SPACEFRAME



Spaceframe is placed on the roof of the entrance passage of the Test Site as an expression of the desire to make a change in the densification of highly commercial business property in this area by adding housing.

GROOS



GROOS is a concept store for products designed in Rotterdam based in the Schiebblock. It is one of the initiatives besides BAR, Biergarten and Op het Dak that offered entrepreneurs an opportunity to gradually build up their businesses.

BAR



BAR aims to bring livelihood to forgotten areas and to re-energize the city of Rotterdam's night and day life, housing a stage for debate, urban culture and local intellectual production.

FABRIQUE URBAINE



The Fabrique Urbaine is a semi-public, fully equipped workshop for making models, furniture and urban interiors. It is an attempt to re-integrate production in the city, based on local circuits of production, economy and knowhow.

Partners: Annabel, BAR, BAM rail, Caparel, Eye on property, Kodos, Kooyman Publiciteit, LaceFence, Martin Veldkamp, Pieterman Schilders, Pro6, Rotterdam Festivals, Smits Rinsma, Valerie Kuster, 75B, AIR, Annabel, AXA Real Estate, AXA, BAM woningbouw, Bewonersvereniging Delftse Poort, Bewonersvereniging Helipoort, Biergarten Rotterdam, Binder Groenprojecten, BIRD, Brand! communicatie, Café Open, Catja Edens, CODUM, Crimson Architecture Historicians, de Dépendance, deelgemeente Noord, Fabrique Urbaine, FGH, Food Lab, Fortress, Gemeente Rotterdam, (Stadsontwikkeling, Bureau Binnenstad, Projectmanagement, Verkeer en Vervoer Stadsbeheer, Gemeentewerken, Bouwinspectie Brandweer, Grafisch Lyceum, Groos, Grootlemmer, Guido Marsille, Havensteder, HipHopHuis, Hofbogen BV, Hollywood Music Hall, IABR, Jim de Jong, JP van Eesteren, LOKAAL Espresso, LSI project investment NV, Lungo, Made by Mistake, Mangrove, MESS, Motel Mozaique, NL Realstate, OMI, Ontwikkelcombinatie, Popenburg, Opperclaes, Optigroen, Ossip Architectuurfotografie, PMS72, Prorail, Rabobank Rotterdam, RET, Roffa Mon Amour, Rotterdam Archiguides, Rotterdam Central District, Rotterdams Milieu Centrum, Schiebblock, Spaces, Stadsinitiatief Rotterdam, Stichting Bevordering van Volkskracht, Stichting De Loodsen, Stichting DOEN, Stichting Vredestuin, Stimuleringsfonds voor Architectuur, SuperUse Studios, Vestia, Video Werk!!, Vrienden van de Hofpleinlijn, VVE Hofdijk, Webclusive, Willem de Koning Academie, Wunderbaum, Zonneveld ingenieurs