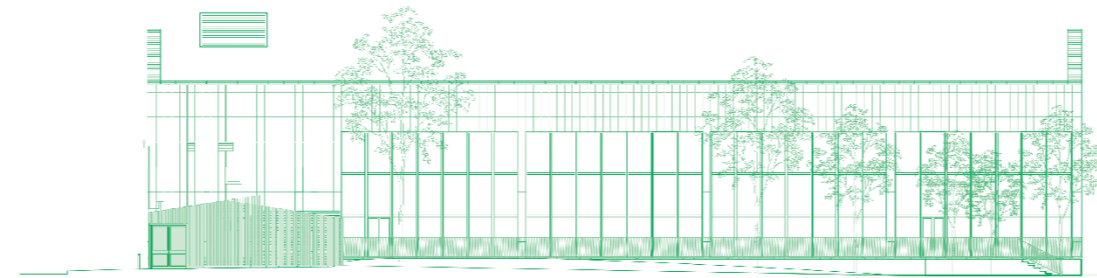


VIRGINIA GARDENS PARK

BELOW Before DK-CM's intervention, the space between the 1960s swimming pool and Virginia Gardens was a disused sun-deck and delivery bay. Both turned their back on the High Street.

BOTTOM Our intervention creates a new park, bringing the swimming pool into dialogue with the street for the first time and providing much-needed green amenity, also opening up new routes into the surrounding suburbs.



Scale 1:400

ABOVE Delivered as a separate commission and currently on-site, a small retail unit and public convenience is proposed to 're-clad' the delivery bay of the pool and bring a 'High Street' character into the park.

BELOW At night the swimming pool, previously obscured, becomes a major 'public room' facing the High Street. The 1960s interior is celebrated and swimmers swim under the dappled light of newly-planted mature trees.

BOTTOM A new balcony is applied to the swimming pool, providing the necessary privacy and enclosure from the street. The railings, handmade in London, reference the original 1960s architecture and give the original building a new delicacy.



COMMISSIONS

TOP Assemble created a new public entrance to the local country park, situated between the town and its station.

MIDDLE Shopfronts were improved across the High Street, designed by a group of young designers and artists

BOTTOM DK-CM authored Barkingside's first ever architectural and cultural history, and published this as part of the project.

