

ALCHEMIKA FACILITIES COMPLEX 03



Library. Level 00-01.



Upper corner. Residence, community center and nursery school access.



Upper corner. Facade not included in the original industrial complex. Previous state.



Upper corner. View of the ramped passage. Nursery school access.



Guinardó Street facade.

DESCRIPTION

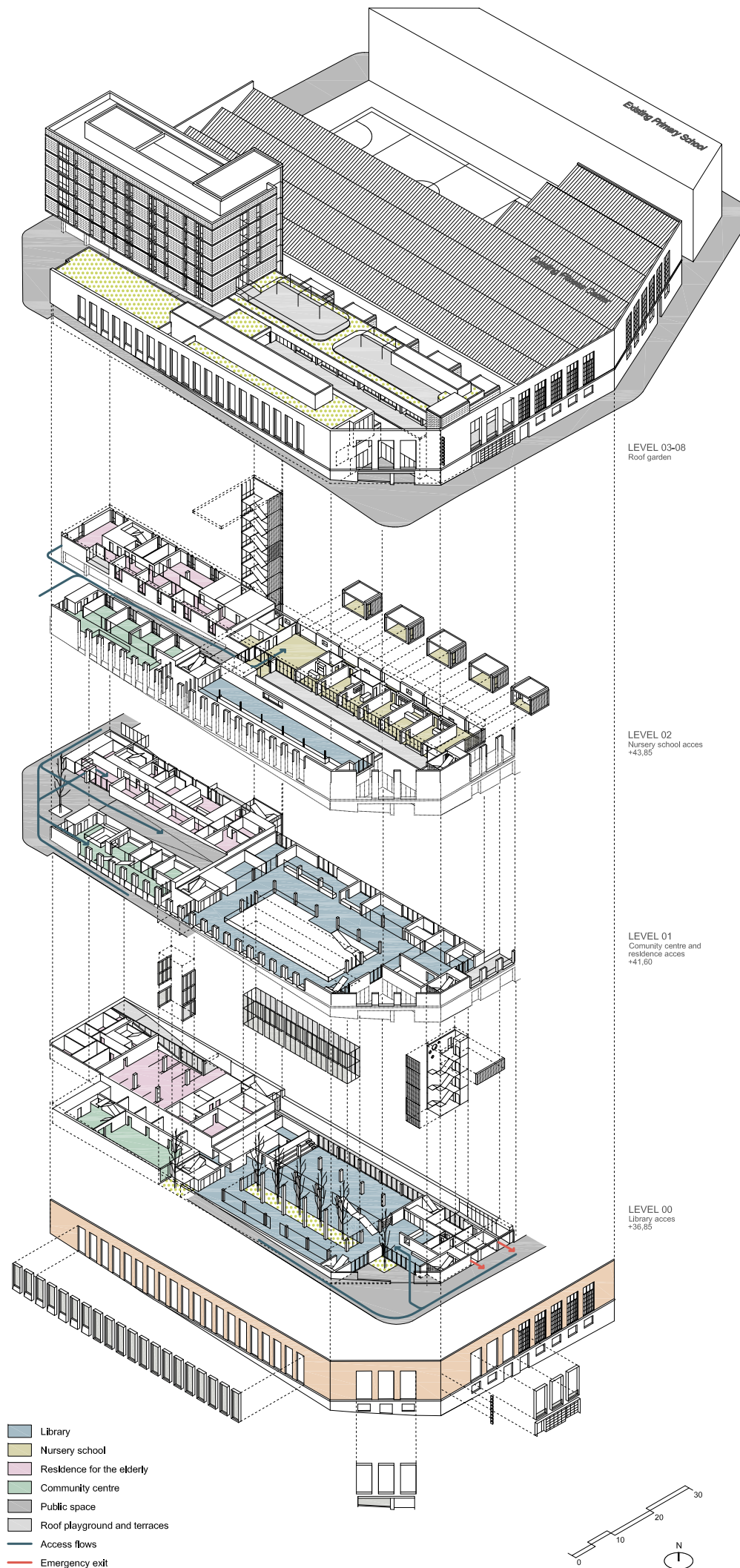
The difference of more than one floor between the two street corners, together with the slope of Guinardó Street meant that much of the program should be developed underground. The library, nursery school and community center are located within the theoretical volume defined by the existing facade. The nursery school is set up at such a height that allows access via a ramp from the upper chamfered street corner while at the same time positioning below two additional levels for use as the library with access from the lower chamfered corner. The residence for the elderly, on the northeast corner of the site, is formalized as a vitreous volume resting on a new base defined by the original manufacturing volume. The green roof of the school is shared for use as a playground for the school and as a sun terrace for the residence.

The existing facade, of grand order, was pre-existing and the project sought to integrate it through the construction of interior spaces consistent with its scale and character. Faced with the need to find expansion mechanisms, the project is articulated through a scheme of solid-void slots that generate light wells and new interior facades that allow the illumination and ventilation of the program.

The robust stone plinth hindered the goal to achieve the desired permeability. In the upper corner, whose facade no longer formed part of the original industrial complex, the decision was made to break the chamfer creating a small plaza and a ramped passage that concentrates the access flows to the nursery school, the community center and the residence. In the lower chamfered corner, by perforating the existing facade, a large door resolves both the visibility of and access to the library through an interstitial patio.

ASSESSMENT

Despite being an intervention of eminent architectural character, there has been an attempt to transcend the boundaries of the site and the program, paying particular attention to the design and formalization of the points of access through the creation of a system of outdoor transitional spaces that seek permeability and continuity with the public space while fostering the emergence of new spaces for interaction and encounter. The dynamic effect it has had on its environment and the rapid acceptance by its users are the greatest achievements of the intervention. In its first year of operation, the Camp de l'Arpa - Caterina Albert Library has become one of the most utilized libraries of the city of Barcelona.



Residence sun terrace. Level 03, roof garden.



Nursery school. Level 02, roof playground and central patio.



Library entrance patio.



Library entrance patio.