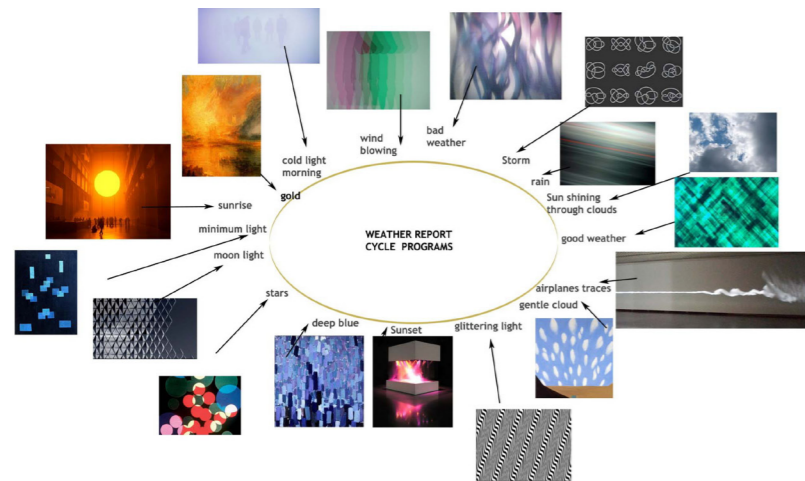


LED CLOUDS *Sophie Valla architects and Evert Verhagen* Gas stations in the spotlight

The light installations under the flat roofs are the outstanding feature of the remodelled structures. Sixty textile panels made of the fabrics used in advertising were cut to various sizes to meet the dimensions of the existing structure. Each fabric panel was backlit to form an LED-like screen that can be programmed independently. The 60 fabric panels were combined with colourful spotlights in a giant puzzle, creating a 10 by 40 meters artificial sky.

Using skilful programming of both the LED-like panels and the spotlights, dynamic light animations lasting 30 minutes mimic shifting cloudy Dutch skies. Twenty fluctuating skies inspired by nature but generated with technology lead us through bright and stormy days from sunrise to sunset. The changing environment creates a somehow surreal atmosphere.

Cycle of loops: from sunrise to starscape



Textile plan combined with the existing steel and wooden structure

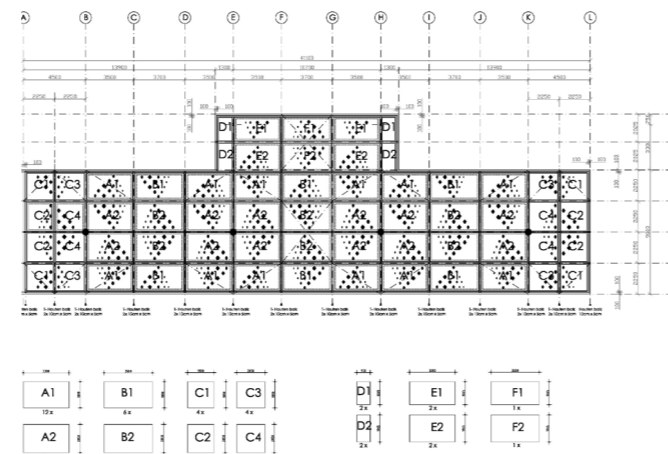
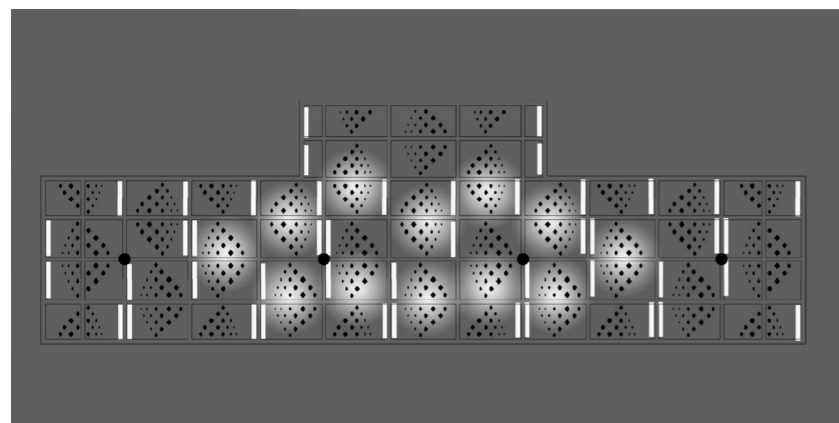
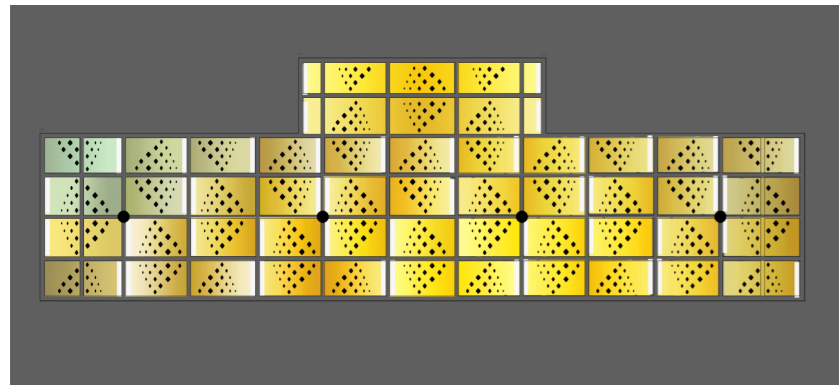


Photo: Marcus Koppen

Light plan



Light animation

