

P.Zoranic Square and S.Budinic Plaza; Zadar (Croatia), 2013

Panel 1

Dukes Palace

Kalelarga (former roman decumanus)

Church of St. Simeon

S.Budinic Plaza

Providure Palace

"Bridge" over the position of the Roman Archway

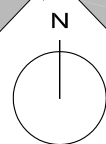
Northern base of the Roman Archway

Presentation of the medieval entrance with the indication of the medieval wall in the treatment of stone pavement

P.Zoranic Square

Bastion Grimani

Anastylosis of the base of octagonal tower as part of the roman fortification



0 1 5 10 m

Kaptain's tower

the Five Wells Square

Croatian artist, Josip Vaništa, said that he liked best to draw at dusk or in foggy weather, when details pale into insignificance and only that which is essential remains. Similarly, the ambition of this project was to reduce the architectural intervention to the "essential": a barely visible gesture, a sort of "cleansing" that will optimally highlight the immanent yet hidden values. The identity of a public square as the generator of urbanity and social life rests both on continuity and openness to the new. That was the reason to make an architectural intervention which would dwell on the qualities already present on this historically important site, as well as on personal memories and impressions but at the same time provide enough space for a new way of utilization in the time to come.

Considering the archaeological remains, we integrate them into the living tissue of the square, without falling into the trap of making an "open air museum" out of the most vibrant part of the square. This has been achieved by, on the one hand, carefully reconstructing the archaeological finds beneath the present-day ground level of the square..

The square is articulated as the topography of a continuous surface, creating a smooth and fluid alignment that connects all the different elevations of the square. By the same token, the urban furniture of choice was subdued. The very inclination of the square and its constituent elements - the archaeological anastylosis and the green islands framed by a wooden bench - form the sole urban equipment.

