



MAIN SQUARE ENTRANCE ON WEEK END



KIDS PLAYGROUND AND PAVILION



PAVILION ARBOUR



SQUARE ENTRANCE

## CITY CENTER PAVILION AND MAIN SQUARE

On the other side of the pavilion, a Provencal garden is defined by 9 trees and a water canal.

The pavilion is hosting activities and functions, beginning by the children area: a small theater and a playground, the fountain, toilets, a covered space for party, open air lunches and at the end an open air theatre for projection, children shows or movies shows.

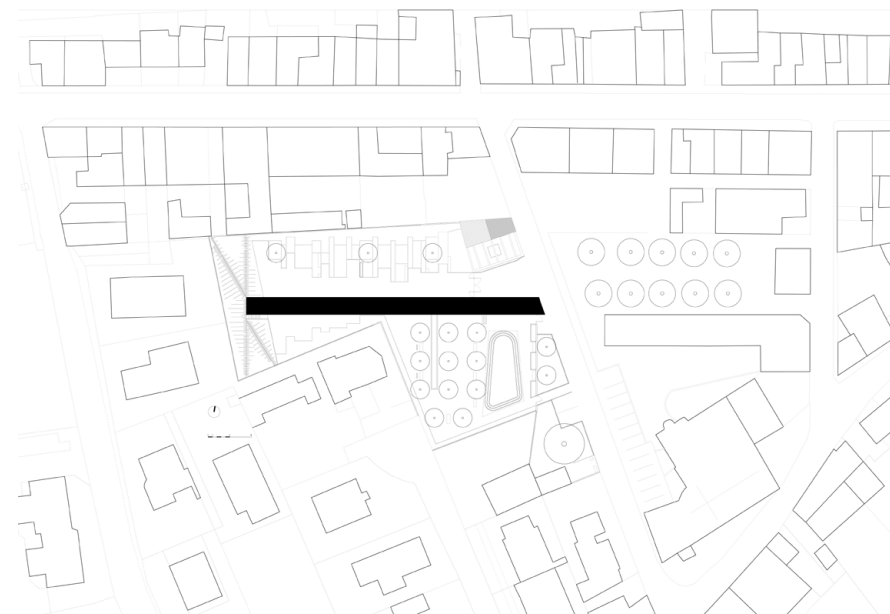
A modern Provencal approach: the ceramic colored pattern comes from a piece of ceramic founds on the site, as a testimony to the region's heritage.

The entire urban project is creating several intimate spaces and foster social gatherings and activities. It is a powerful tool to help the municipality realize its social policy goals towards the citizens of Gignac la Nerthe.

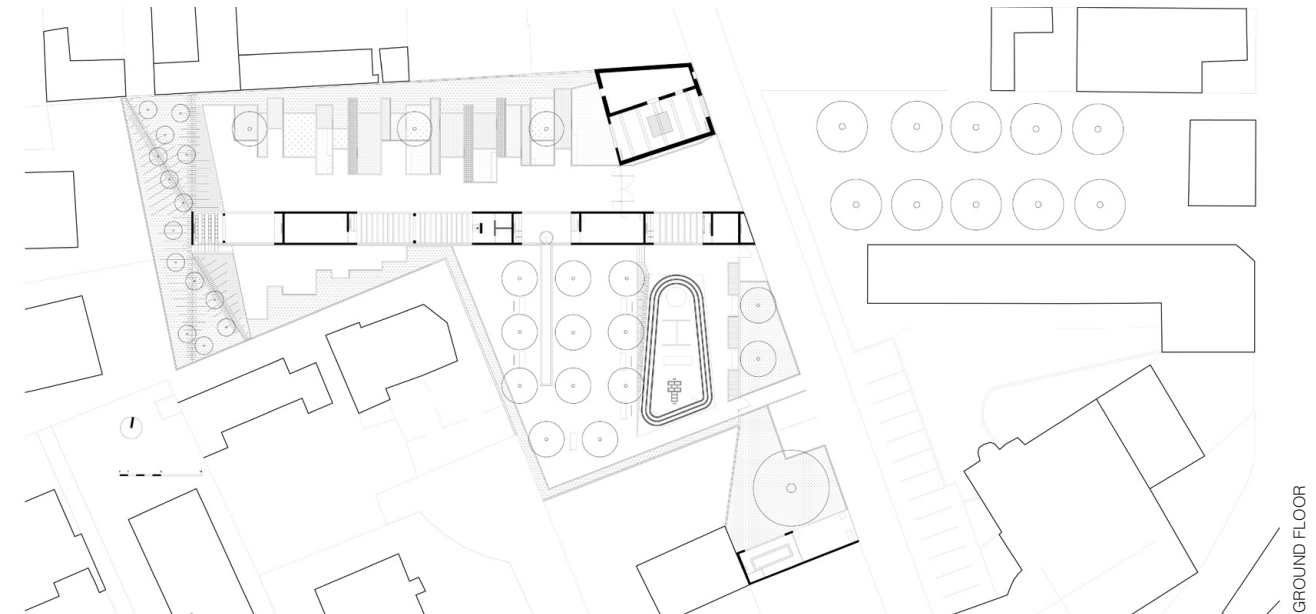
03

**Architect**  
**Location**  
**Surface**  
**Client**  
**Budget**  
**End of construction**  
**Landscape architect**  
**Photographer**

Comac (www.comac.ac)  
Marseille – Gignac la Nerthe, France  
3000 m2  
City of Gignac la Nerthe  
750 000€ (Free taxes)  
July 2013  
Paul Petel  
Philippe Ruault



SITUATION PLAN



GROUND FLOOR