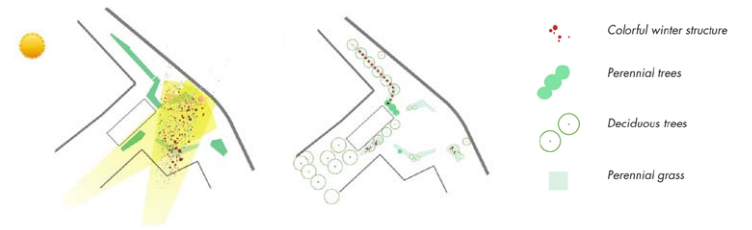
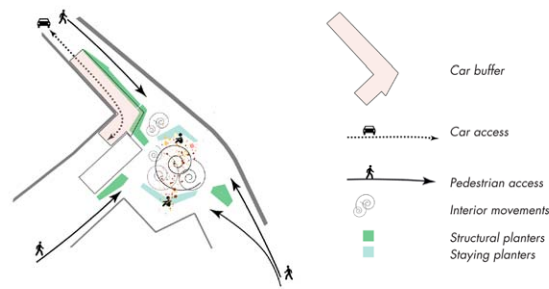


# PLANTING

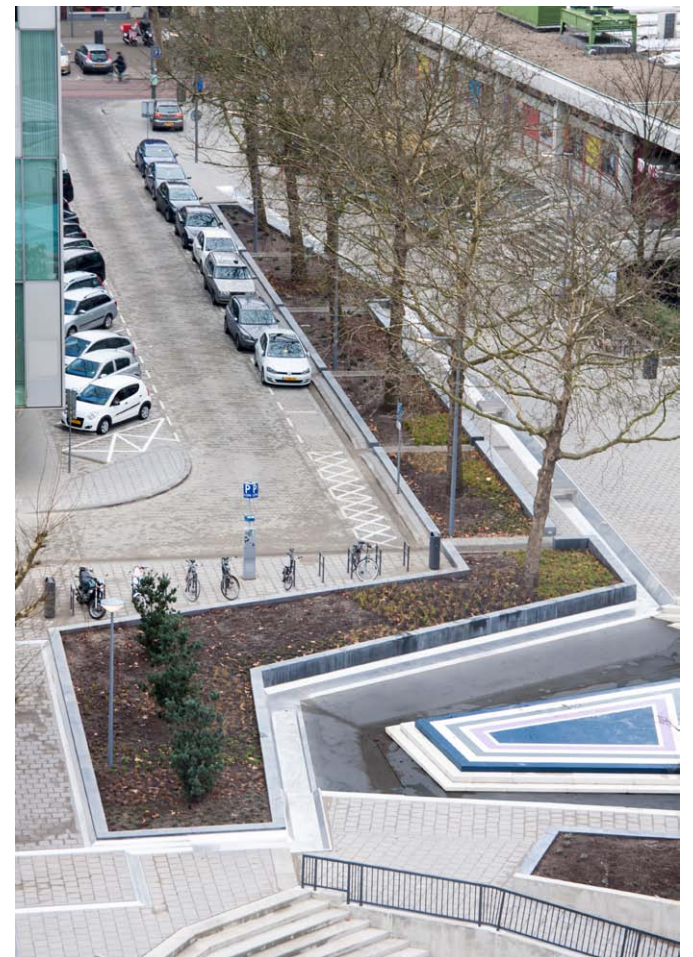
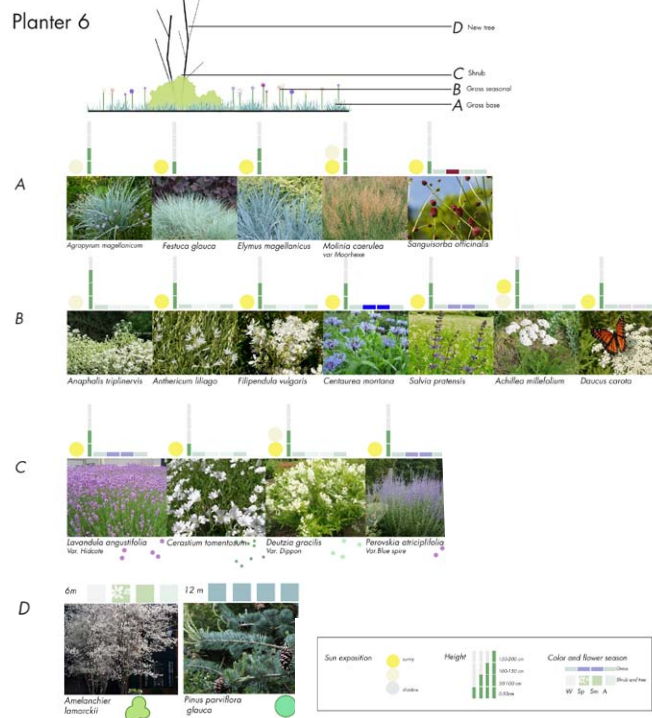
Planting scheme for the water square: plant colors show shades of grey and blue, when spring arrives white, blue and purple blossoms jump up with an occasional red

Planters accompany pedestrian movement and emphasise places to linger

summer color explosion, soft winter colors



view on planter 6



existing trees are placed in large planters

# INVOLVEMENT

On the Benthemsquare the first water square has been realised. In an intense participatory trajectory with the local community we jointly conceived ideas about the square: students and teachers of the Zadkine college and the Graphic Lyceum; members of the adjacent church, youth theatre and David Lloyd gym; inhabitants of the Agniese neighborhood, all took part. In three workshops we discussed possible uses, desired atmospheres and how the storm water can influence the square. All agreed: the water square should be a dynamic place for young people, lots of space for play and lingering, but also nice, green intimate places. And what about the water? This had to be excitingly visible while running over the square: detours obligatory! The enthusiasm of the participants helped us to make a very positive design.

