

Water square Benthemplein Plan

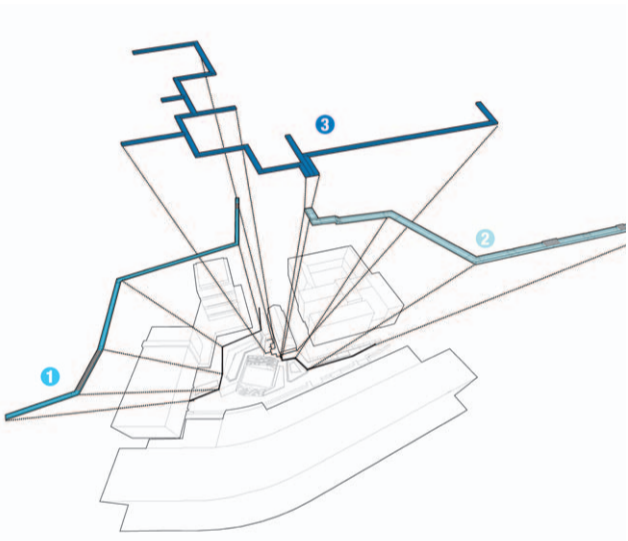


rain well



water wall

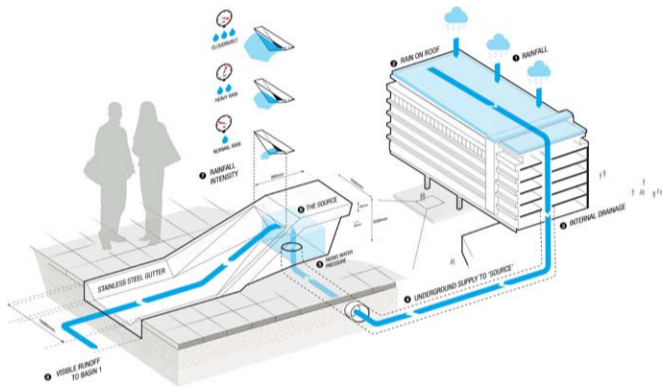
WATER FEATURES



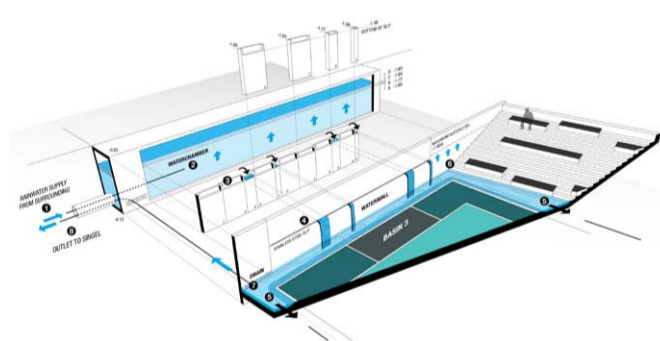
Grand stainless steel gutters transport the water into the undeep basins 1 & 2



Shades of blue indicate floodable places the color scheme matches the few colors of the modernist Maaskant building



the "rain well" leads the water from the roof into the gutter



the "water wall" takes the water from further surroundings into the deep basin



gutter details



summer 2010, before the intervention



winter 2014, after the intervention