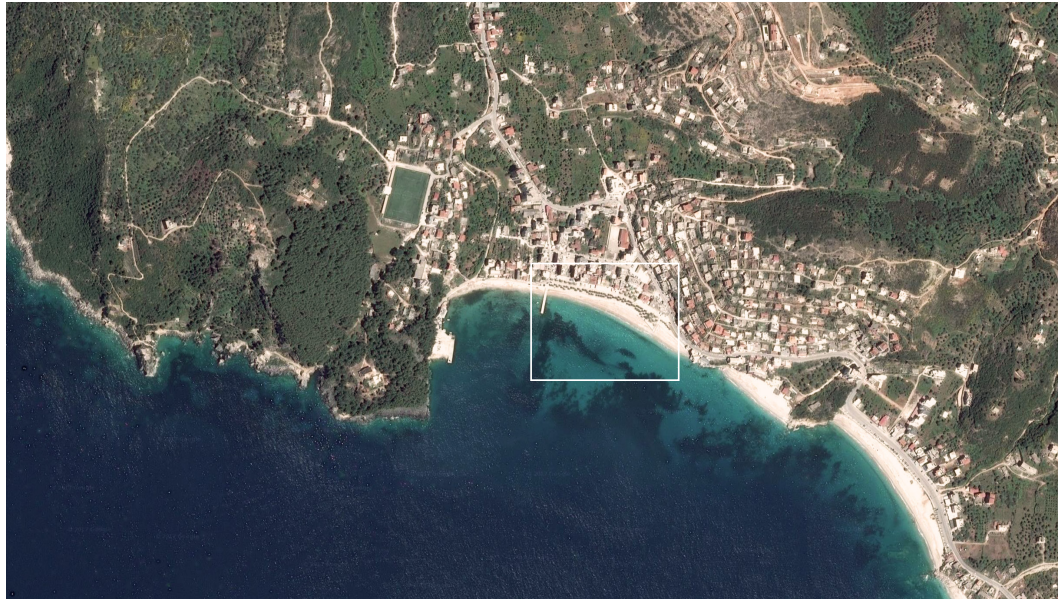
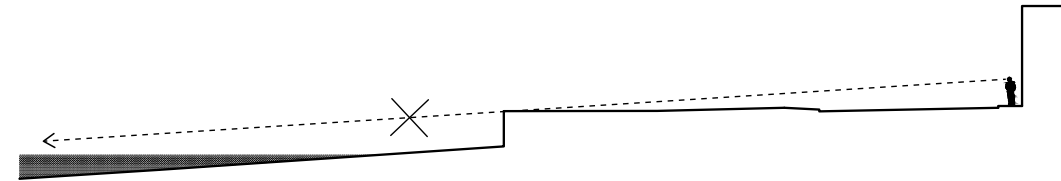


HIMARA WATERFRONT, HIMARA

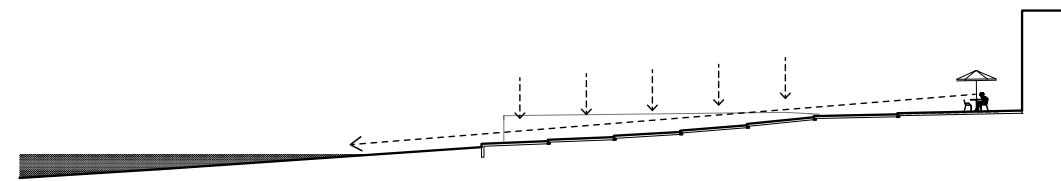
The project is part of the 'Atelier Albania', an EU funded programme where international experts team up with local offices. Himara is a sleepy beach town in southern Albania with great potential for tourism.



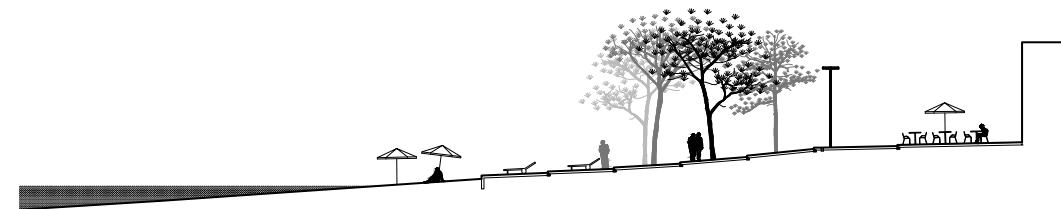
It has a beautiful coastline along the sea with white sandy beaches, surrounded by terraced hills. The project offered the opportunity to rethink the relationship between the city of Himara and the Ionian Sea.



The former boardwalk consisted of a road, built on top of a retaining wall, two meters above the level of the beach. The view to the beach was blocked by parked cars, while only a few staircases offered a connection with the beach. The sea was hardly visible, and the beach difficult to access.



We demolished the retaining wall and replaced it with a sequence of platforms sloping gently towards the water in one continuous movement.



Beach and waterfront have become one single public space.