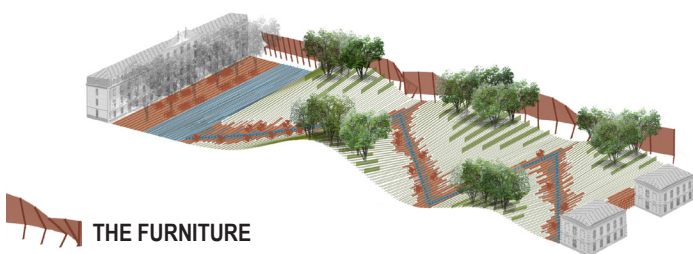
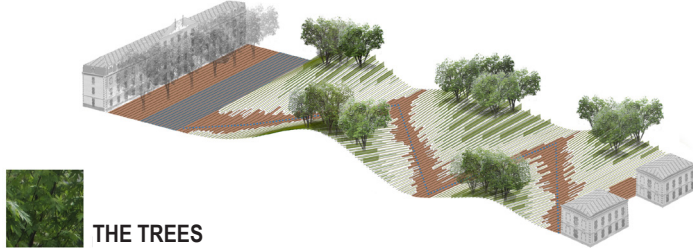


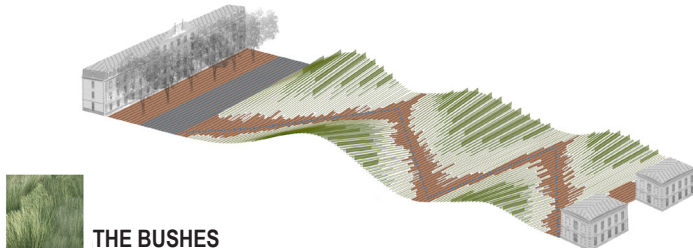
DETAILS



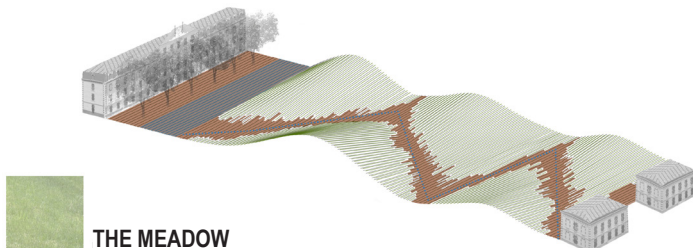
THE FURNITURE



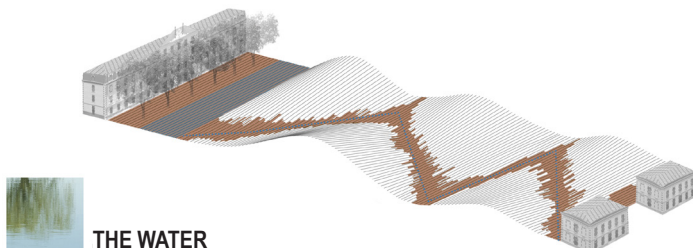
THE TREES



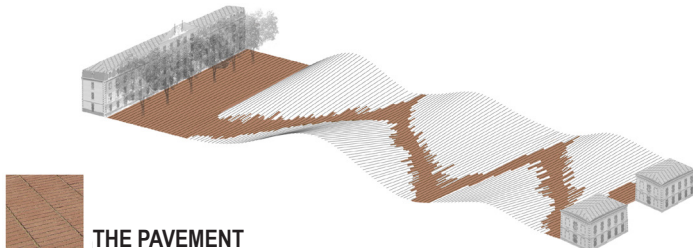
THE BUSHES



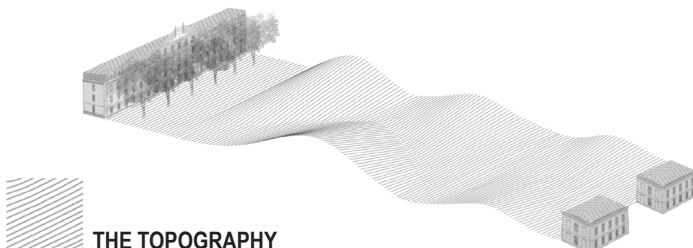
THE MEADOW



THE WATER



THE PAVEMENT



THE TOPOGRAPHY



THE CONCEPT

### THE FURNITURE

It is light and transparent. Pergola, entry portal, benches, chairs and sun loungers are meant to be invaded by vegetation. The grass grows through the banks and allows you to rediscover the feeling of sitting in the meadows.

### THE TREES

A random planting of three varieties of maples. They occupy the highest points accentuating the topography. This spice was chosen for its rusticity, the beauty of its treetop and its colors in autumn.

### THE BUSHES

The hills are planted with grass and iris. Bushes are allowed to grow like wild nature which invades the mid-points of the hill areas creating a small forests environment.

### THE MEADOW

The meadow merges with the brick pavement. An oscillate texture from mineral soil to vegetation areas moves through transition zones where the two materials are interspersed.

### THE WATER

Rainwater infiltrates and is recovered in an underground raft that will later irrigate the park. A sheet of water creates a mirror and reflects the historic building facade and the existing trees.

### THE PAVEMENT

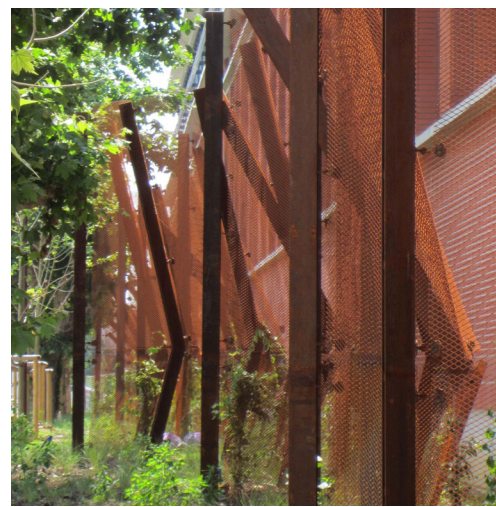
The brick is the emblematic material of Toulouse, known like the *Ville Rose*. The system works with prefabricated bricks on a metal mesh. It is placed on the relief and cover its inflections.

### THE TOPOGRAPHY

Is created thanks to the earth extracted from the construction of the surrounding buildings. The result is an oscillating elevation of the plane of the soil that allows to introduce the vegetation

### THE CONCEPT

An undulating veil covers the archaeological remains. It is projected over the place and evokes the Lauragais's hills region.



CONSTRUCTION PROCESS



RESULT