



A



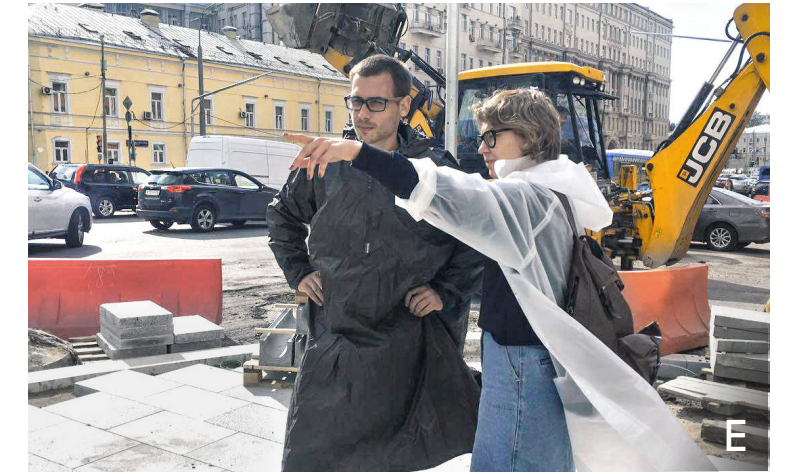
B



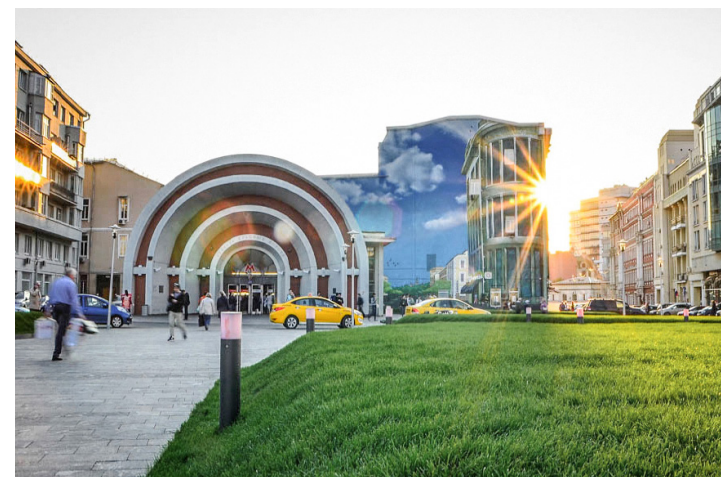
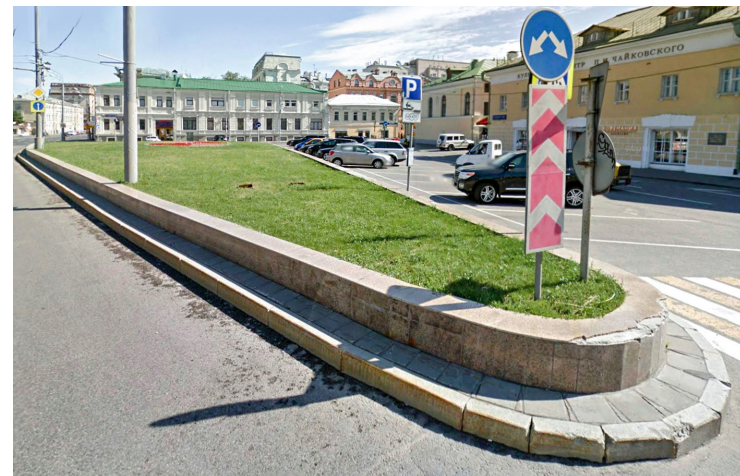
C



D



E



Billboards creating “visual noise” are replaced by greenery
Photo: Olga Alekseyenko

An unused piece of land on Kudrinskaya Square turns into a cozy park
Photo: Moscow Municipal Services Complex

The square in front of the Krasnye Vorota metro station entrance designed by Nikolai Ladovsky
Photo: moscowwalk.ru

Once it was turned back into a pedestrian-friendly street, the Garden Ring started to attract a more diverse set of businesses. According to research into the effects of the renovation conducted by Strelka KB, banks and offices have made space for a greater number of food, retail, and service businesses. Large-scale planting created a stabilizing effect on the microclimate, minimizing road dust and generating oxygen. Pervious paving prevents flooding and improves drainage, and lessens the heat island effect that asphalt can have. Granite paving stones absorb heat more slowly than asphalt. The improvements to the Garden Ring have made the city center more accessible to all citizens and integrated it with the periphery.

- A New businesses open after renovation of Novinsky Blvd
Photo: Moscow Municipal Services Complex
- B A skateboard park under a bridge
- C Recreational space for all citizens
- D Public discussions with experts
- E Architects overseeing their projects on site

111 HA
TOTAL AREA

13 
NEW PUBLIC SPACES

196 
HISTORICAL ARTIFACTS
DISCOVERED

20 
NEW CROSSWALKS

8 
NEW PUBLIC
TRANSPORT LINES

2880 
TREES PLANTED