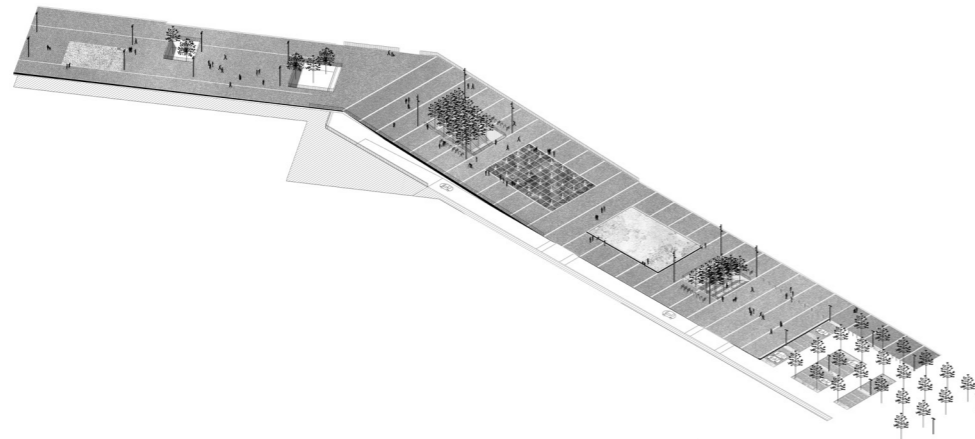
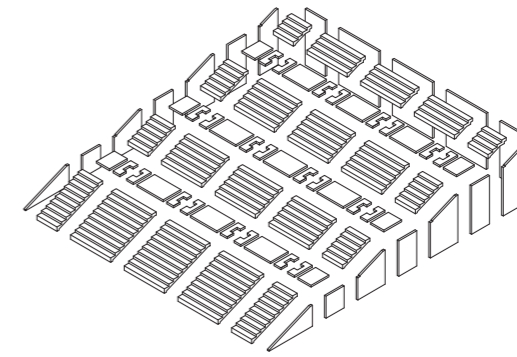
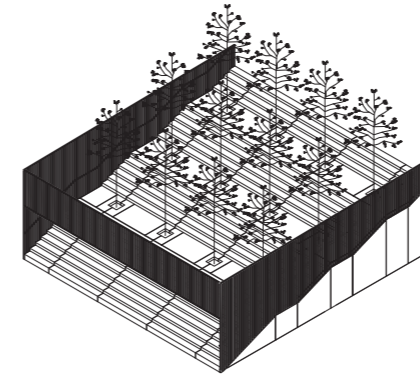
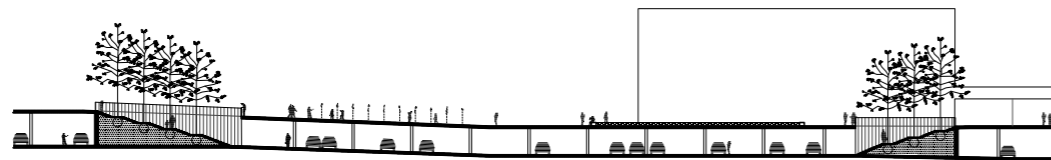


A gently sloped esplanade reconnects the elevated pedestrian deck with the level of the natural terrain to the East, where a new library has been built by Robbrecht and Daem. Underneath this incline, a new parking level has been constructed. Two generous staircases are planted with large trees and provide easy access to the parking level.



These openings guarantee natural ventilation; they allow zenithal light and offer a clear point of orientation in the garage. The two staircases face each other in order to create a scenic promenade through the parking garage, as if the public space of the boulevard has been folded into the parking level.



The trees are planted in the triangular volume of the staircases, which act as giant planters. This allowed the roof package of the deck to be kept as light as possible.

