

SITE PLAN

The assignment intended the reformulation of a border street, including the addition of a public parking space.

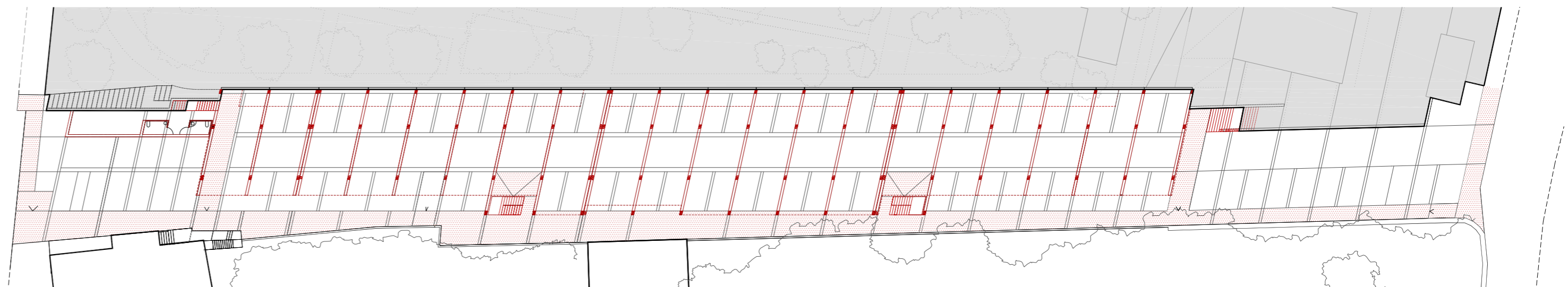
The starting point of the project is the recovery of the original street level, disturbed by the aggressive filling of the 1980s. This leads to a logical and natural transition with the *Finca del Marqués*, and sequentially, with the estuary and the Atlantic.

The vertical displacement of the ground level allows to have two overlaid longitudinal levels: in other words, to have two overlaid streets.

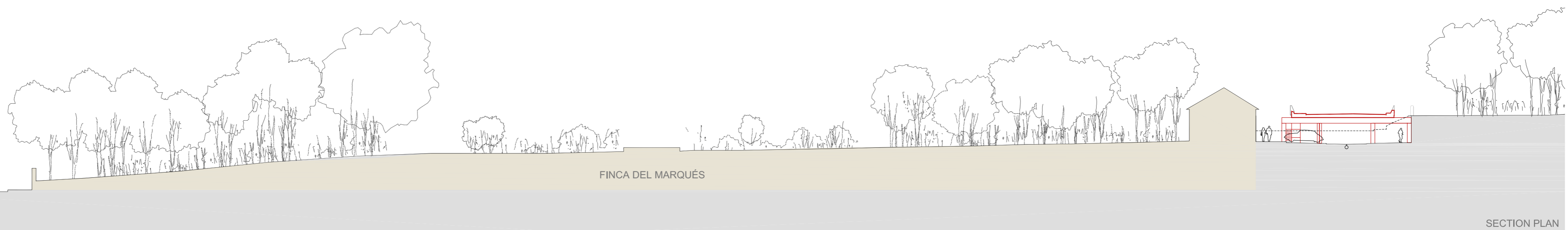
The dual nature of the space is also showed in the uses. Firstly, the double Street works as a continuous circulation space and as a two-storey parking. So to speak, this could be the use on weekdays. Secondly, the cross section transmutes to a "Double Space" and opens possibilities for other uses such as public and social events. All these lounge and public uses, can now have a major role of the double street dedicated to the judge Falcone. In other words, this optimistic mutation of the public space opens new dormant possibilities.



RENOVATION PLAN - FIRST FLOOR



RENOVATION PLAN - GROUND FLOOR



SECTION PLAN