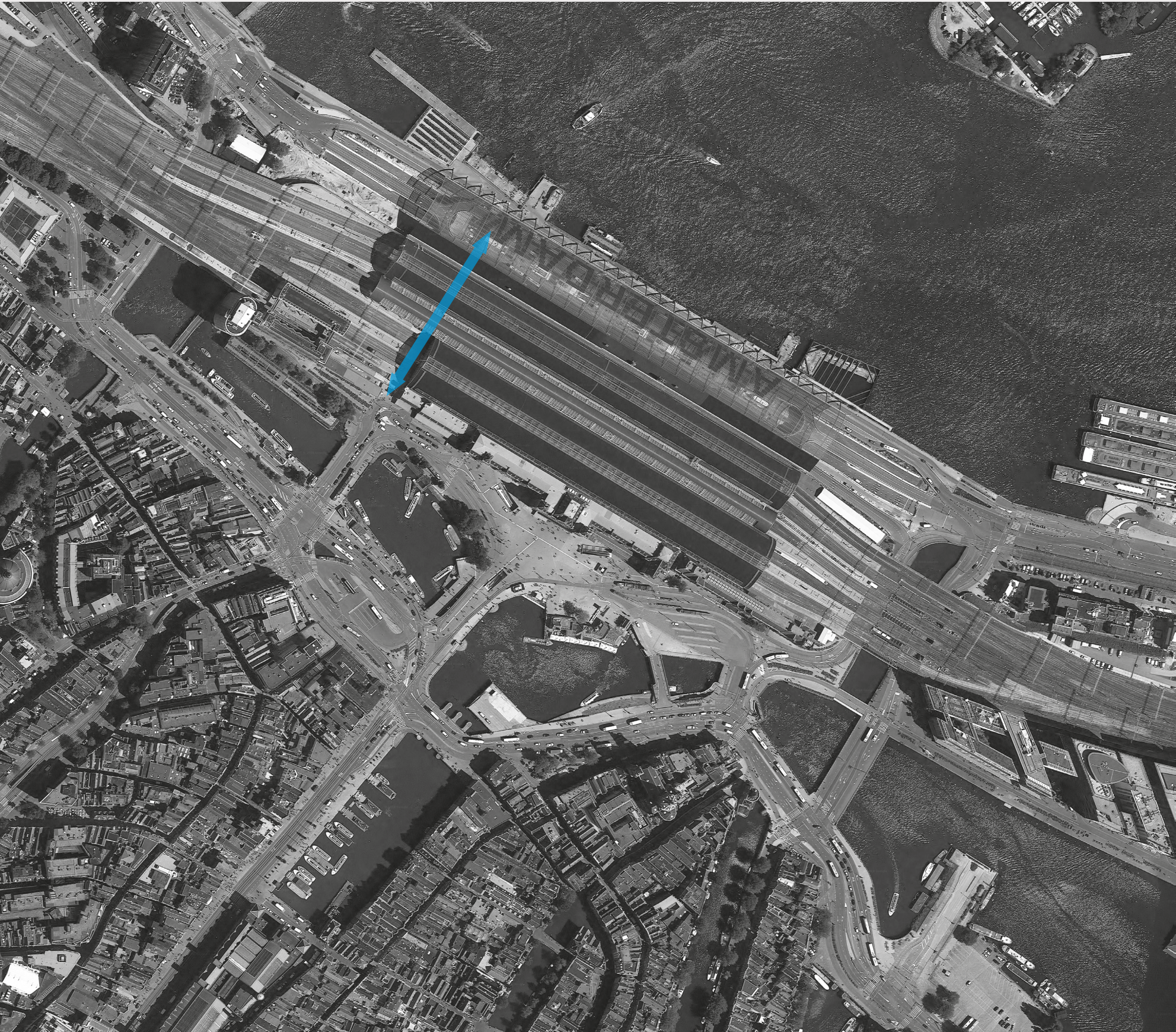


CUYPERSPASSAGE AMSTERDAM

CYCLE AND PEDESTRIAN TUNNEL AT AMSTERDAM CENTRAL STATION



On Amsterdams' station island the bicycle and pedestrian tunnel form a new connection between the city and the water 't IJ. The 110 metres long tunnel is an integral and essential part of Station Island, but is not connected to the station building itself.

In the design there is a clear division between the two user groups, cyclists and pedestrians. Each is given their own lanes. The level for pedestrians is recognizable higher than the bike path, offering over-view and safety for the pedestrians. The cyclists routes is clearly marked by a LED line in the plinth of the footpath.

The wall of the tunnel is covered with 70.000 hand painted and hand formed tiles made by Koninklijke Tichelaar Makkum. The design for the tiles is from Irma Boom, and is based on a eighteenth-century tile tableau of Cornelis Bouwmeester.

- Location: Amsterdam, the Netherlands
- Function: Pedestrian & Bicycle Tunnel
- Client: Municipality of Amsterdam
- Project Management: Dienst Infrastructuur Verkeer en Vervoer, Amsterdam
- Constructor: MNO Vervat
- Time Period: 2008 - 2016
- Total Floor Area: 1.150 m²
- Total Building Cost: 11.900.000 €

