



Country: Spain  
Region: Galicia  
Town: A CORUÑA

AREA OF THE INTERVENTION



BEFORE



**PRIOR STATE**

In the early 21st century, Marina Quay area was characterized by a high traffic volume, with approximately 30,000 vehicles per day, since it constituted one of the main roads to access the densely populated neighbourhoods of Ciudad Vieja, Pescadería and Monte Alto. Pedestrian areas lacked urban quality, and shared the same space with cars and parking areas.

**INTERVENTION**

The intervention was aimed at the transformation of the area, with urban mobility as the key aspect. Therefore, above-ground traffic planning was essential, so that larger pedestrian areas could be made available to citizens, giving them a higher profile.



AFTER

**ASSESSMENT**

This intervention allowed for an ambitious regeneration of the waterfront, a 55,000 sq. m. site, generating a new urban space, functional and versatile.



Bastion BEFORE the intervention



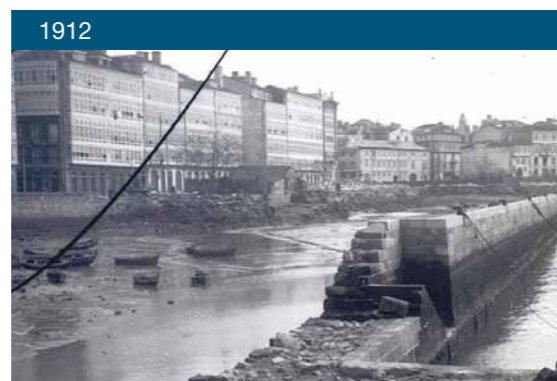
Bastion AFTER the intervention

This intervention has preserved the original configuration of the Marina and Parrote Quays. Evidence can be found in the enhancement of the value of Parrote historical structures, which have become perfectly integrated into their new surroundings.

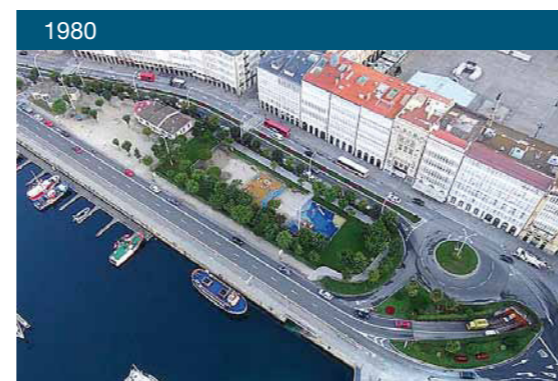
**EVOLUTION OF THE AREA**



1900



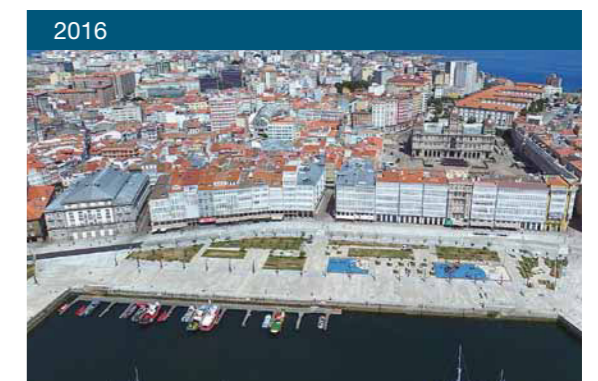
1912



1980



2013



2016