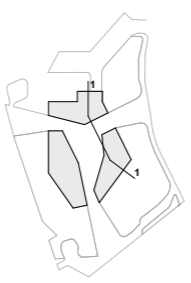
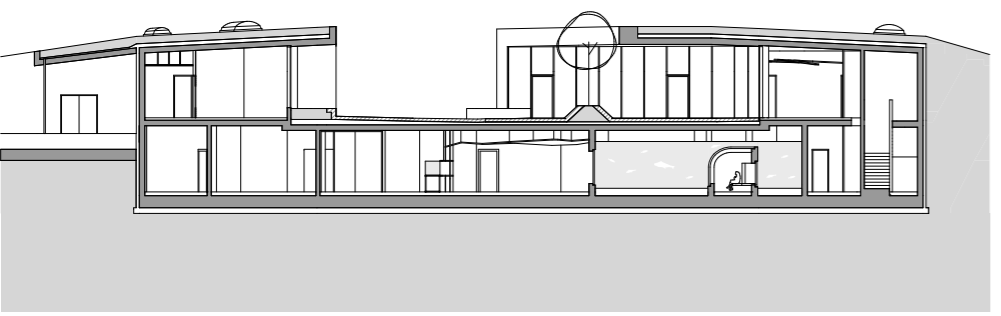
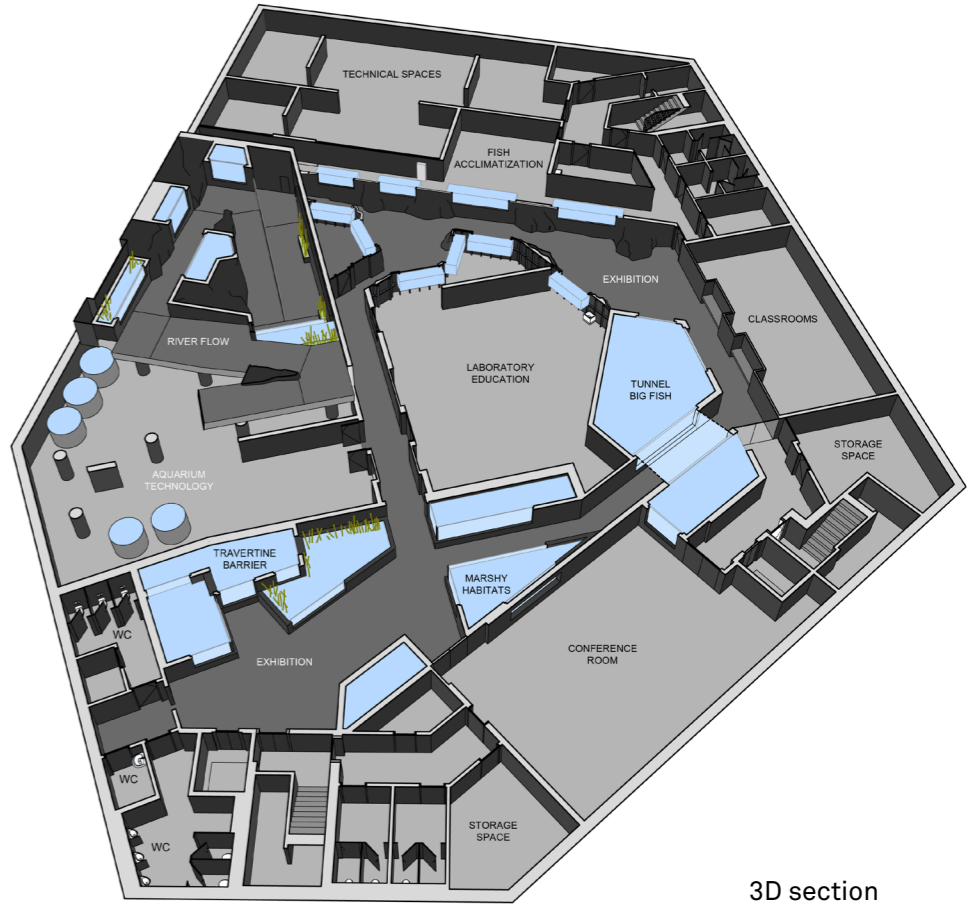
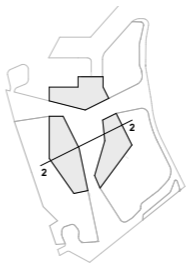


Karlovac Freshwater Aquarium
 Karlovac, Croatia
 Author: 3LHD
 Code: K021, panel 3

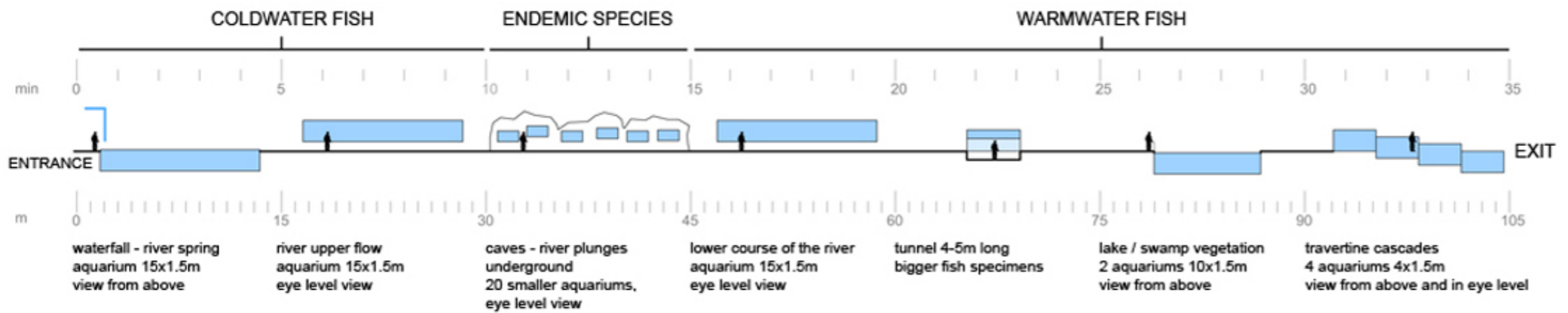
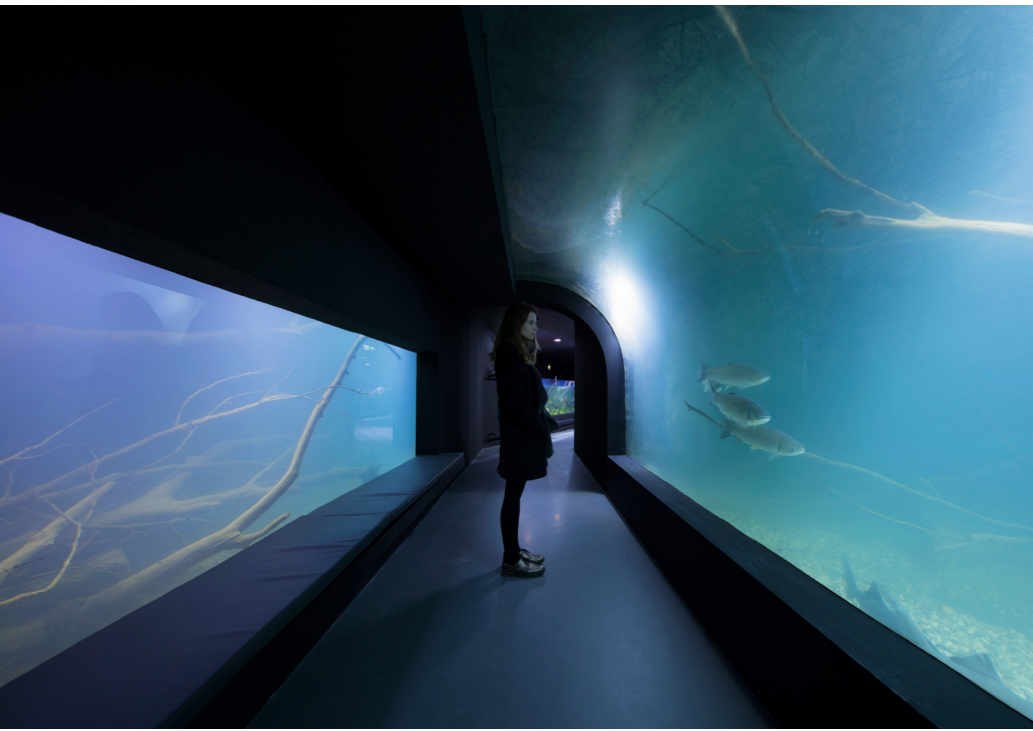
section 01



section 02



3D section



The exhibition displays the flow of a karst river, its flora, fauna and biodiversity. It starts with a water surface on the square, and continues inside the building with a system of ramps that wind like a river down into the basement level. Aquariums are placed along, above and below the visitor paths. The exhibition ends with a system of cascading aquariums whose biotopes display waterfalls and a travertine barrier. Finally, a stairway and an elevator take the visitors to the entrance hall through the gift shop. A space for analysis of the technological parameters of water, a scientific research center and fish acclimatization spaces are located in the center of the layout.