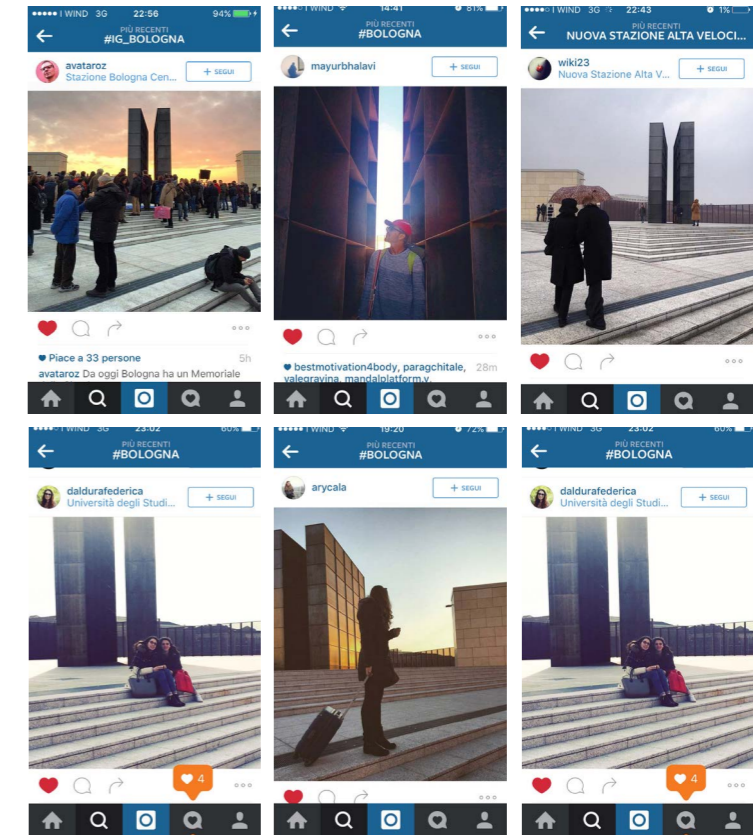




A new space for events



Opening its space for visitors, the memorial transforms itself from being just a sculptural object into a livable space for interaction with people and history, where everyone can isolate one's self from everyday life and immerse into memory.

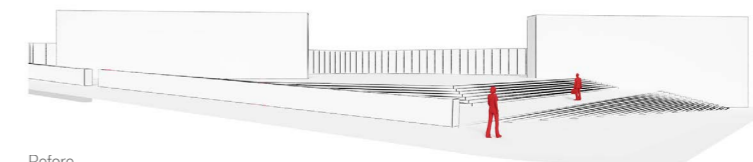
Finally, the light plays an essential role in the project. The memorial can be visited during the day and night. During daytime, when the square is warm and sunny, the interior passage is under the darkness like the bunk beds were delved into the absence of light. The shadow covers the visitor and throws him into a secondary temporal dimension: the view is not well-defined but the thoughts are clear, taking shape in the interior empty space between two blocks.

At night instead, the square is flooded with spread light produced by spotlights set along its borders, while the memorial is illuminated by a strong light that makes it recognizable from the surrounding buildings. It is a Landmark even at night.

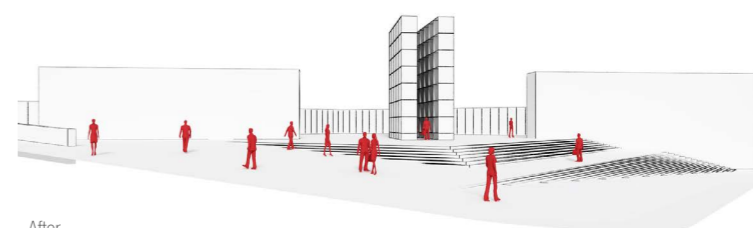
It's the new Landmark of Bologna, giving shape and life to a tragic event in the history of the humankind.



Landmark



Before



After