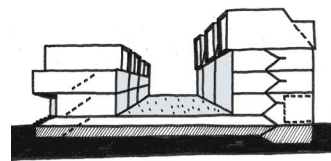
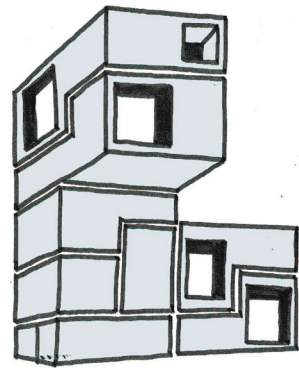




areal view - before



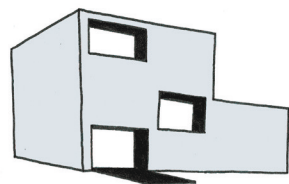
townhouses



multi-story residential building



existing school building:  
re-use as residential



publicly subsidized housing  
development for elderly people

Green square  
Arena square  
Pestalozzi square  
neighbourhood square  
balcony square



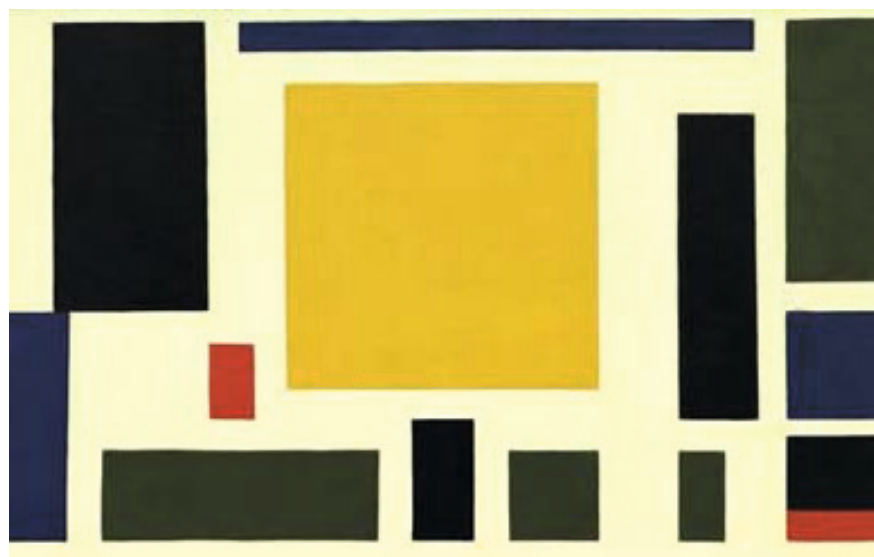
site plan - after

residential: joint building ventures,  
multi-story residential building  
residential: joint building ventures  
row houses  
residential: townhouses  
residential: multi-story residential building  
ground floor: resident-friendly businesses  
residential: multi-story residential building  
ground floor: resident-friendly businesses  
residential: townhouses  
existing school building: re-use as  
residential: joint building venture  
ground floor: resident-friendly businesses,  
existing sports venue  
re-use as multi-functional space  
residential: multi-story residential building  
existing school building: re-use as  
residential: multi-story residential buildings  
existing school building: re-use as  
mix of office and apartments  
residential: multi-story residential building  
residential: publicly subsidized housing  
development for elderly people  
AIDA Entertainment,  
business start-up center

K033

## PESTALOZZI-QUARTER HAMBURG, ST. PAULI

RENNER HAINKE WIRTH ZIRN ARCHITEKTEN



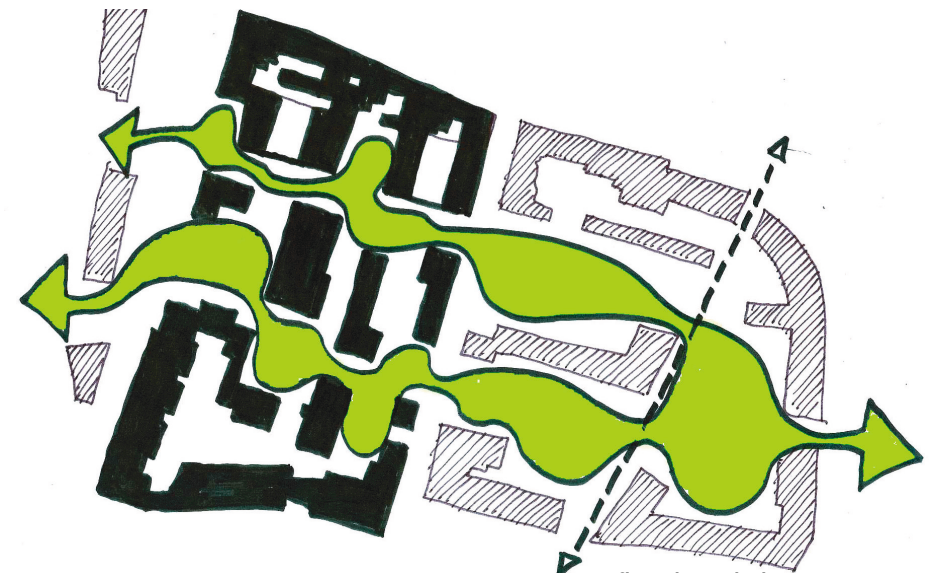
guding principle for the urban planning - Composition Theo von Doesburg

After the Department of Education and Sports decided to close the Pestalozzi School in 2005 the City of Hamburg announced an urban design competition in 2007 to re-develop the then vacant area, which our office won.

The City of Hamburg was aiming for a sensible proposal to densify the building ensemble by adding small scale structures. We re-designed the old school grounds as an area with a family-orientated living environment in combination with residents-friendly commercial use that is acoustically protected by the AIDA Entertainment building to its south. In addition the preservation of the historic school building had to be taken into account. With all these considerations the Pestalozzi-Quarter was created.



public spaces / pocket parks



flow through the green spaces