

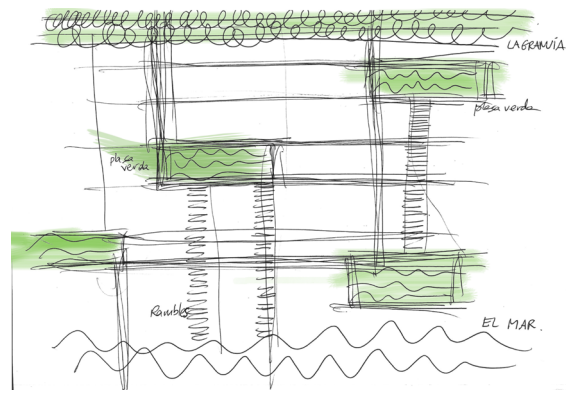
1. CONTEXT AND OBJECTIVES.



View of the site at Besòs - Maresme neighbourhood.
Near the river Besòs and the International Forum area next to the sea

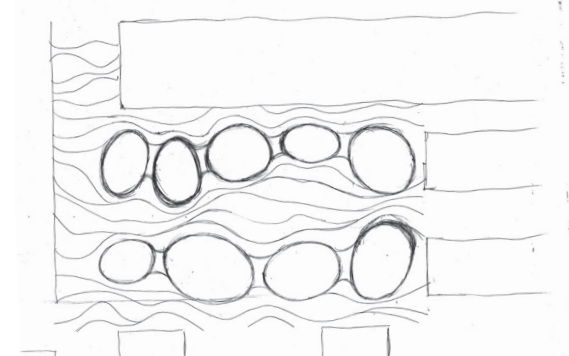
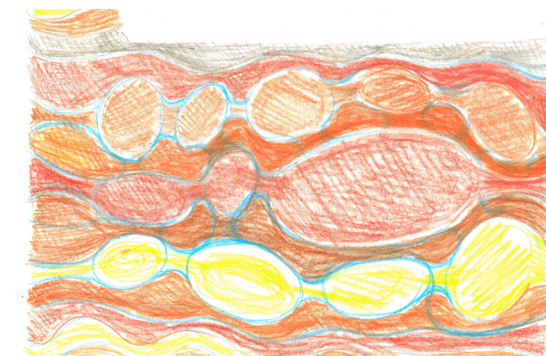
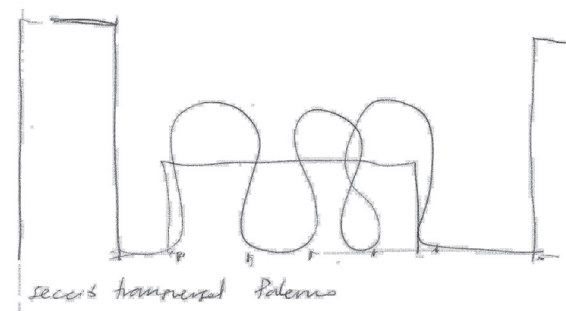
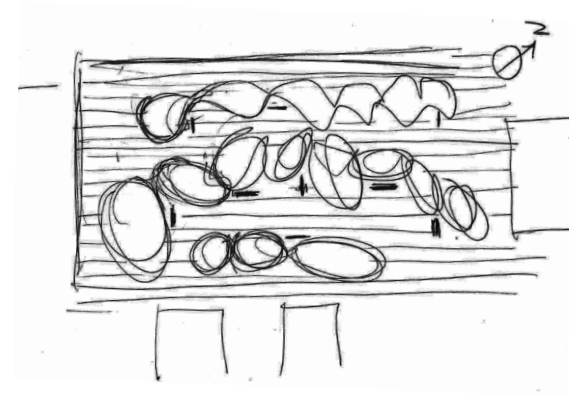
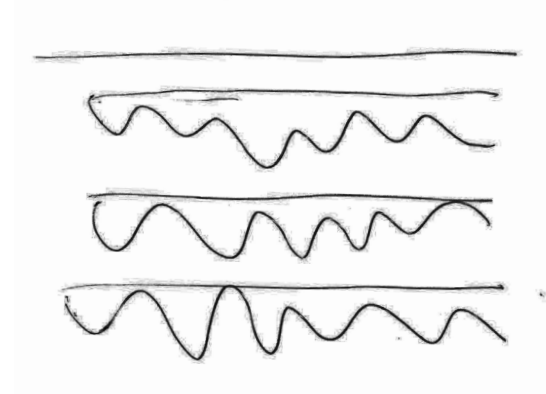
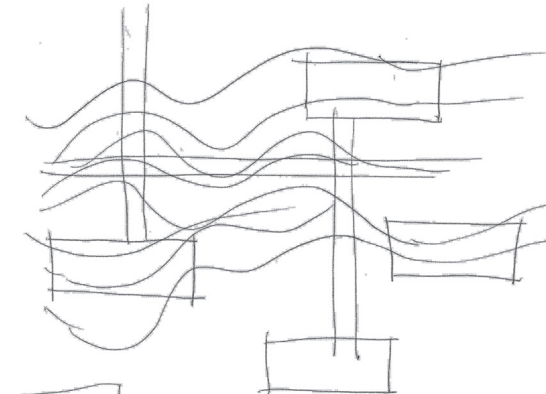


Aerial view of plaza Palerm.
Flanked by a new residential unit, a slab adjacent to the street Cristóbal de Moura.



Process of urbanisation.

Establishing the features of the place through looking at the city structure and the elements that compose the neighbourhood, geography, topography, avenues, system of streets, amenities and residential units.



Studying the bulk of the new trees in relation to the buildings.
Environmental improvement, planted mounds and new sustainable lighting.
Introducing natural conditions within a rational layout.

