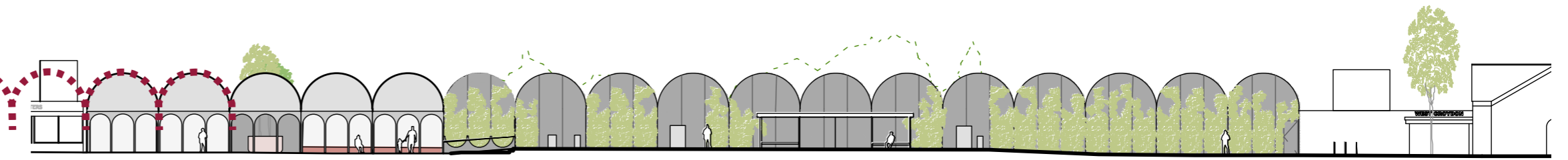


WEST CROYDON INTERCHANGE, LONDON



The project extends the extraordinary historic and contemporary identity of the place. Key assets include the Picture Hall, Croydon's first cinema, May 1908 - 1917.



The designs delivered have addressed the unique fine-grained qualities that make Croydon distinctive, leading to a series of improvements that may be experienced in detail and at a human scale. For example, the arched windows of the nearby Victorian terrace of shops are extended to provide an arched stretch of new station fencing; allowing plants and views to improve the public edge.

Engaging with the edges: A new interchange route linking station entrances to the High Street and Circus was enhanced by a new planted mesh fence designed to give a clear spatial definition and identity to this edge of West Croydon. (Before and after)

