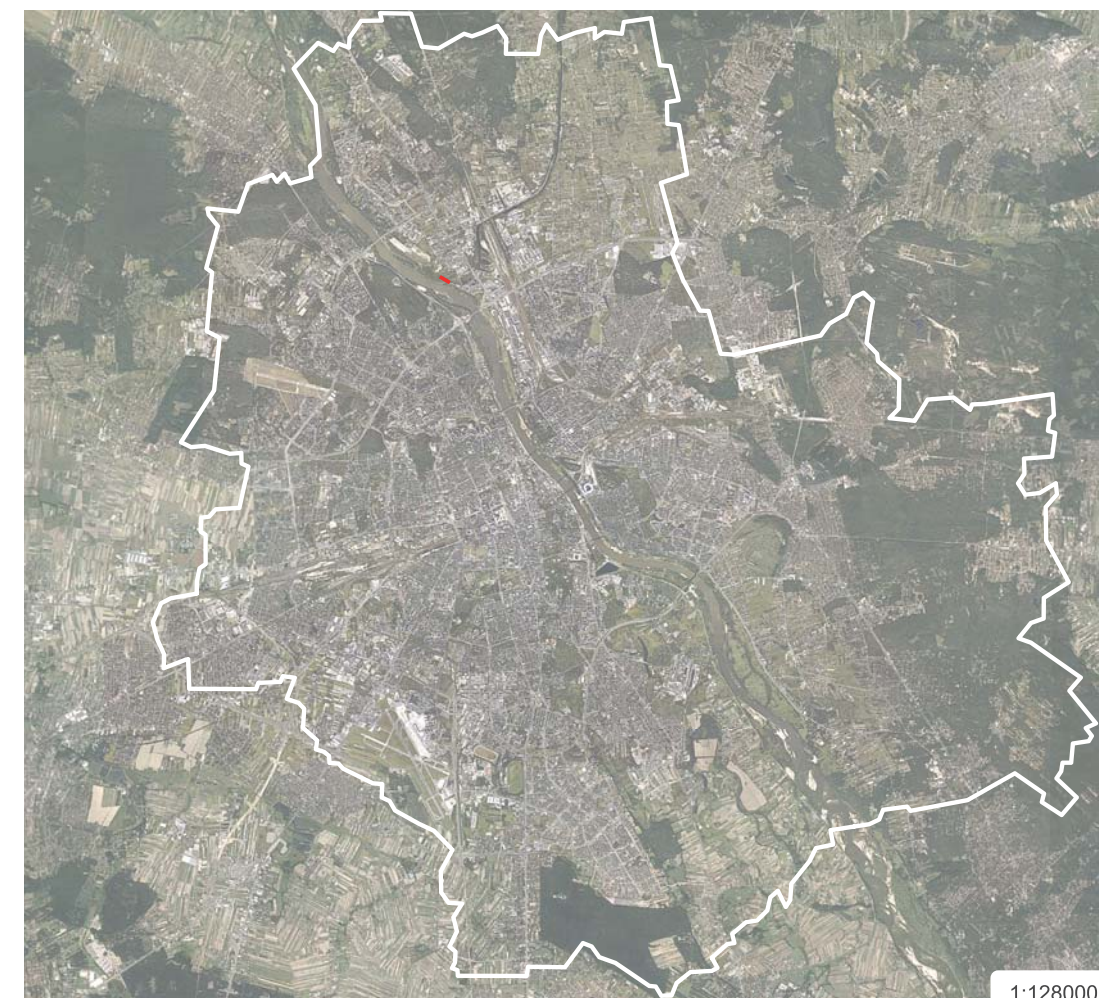




Żerań, situated upon the Vistula river in the north part of Warsaw, has been an industrial area since the 1950s. The district is currently divided into a low single-family development area and a factory area. The latter holds industrial and post-industrial buildings, various types of small scale production plants and logistics sites, as well as manufacture parks. All this replaces communist-era factory buildings closed in the 1990s.



1:16000



1:128000