

# NEGLINNAYA STREET AND CENTRAL CHILDREN'S STORE

PRIZE CODE (CCCB): J275

## SHARED SPACE



The project is the first attempt in Russia to design a street that doesn't provide separated sidewalks, but creates conditions for harmonious coexistence of different kinds of mobility.

## PARKING



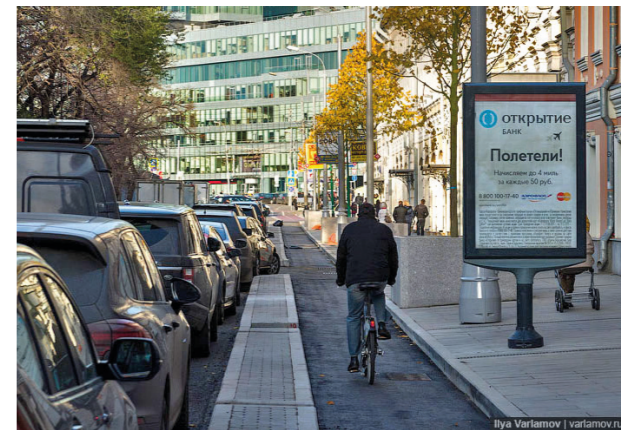
A parallel parking lines separated by planters help to avoid chaotic parkings on the streets as well as maximise the space for pedestrian lines.

## LIGHTING



Traditional lamps with distinctive moscovite silhouette were preserved while the technical part was renovated in compliance with the strict contemporary requirements.

## BICYCLE BOULEVARD



Bicycle path on Neglinnaya street is separated from the road, for the safety of cyclists. In the future it will be prolonged to the Boulevard Ring.

## STREET FURNITURE



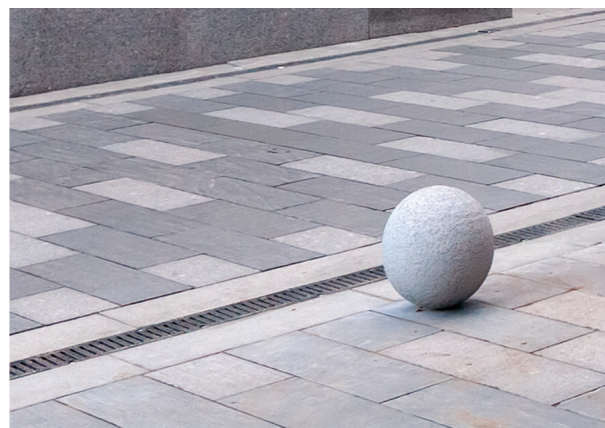
A specially-designed street furniture combines planters and sitting places. This is a perfect solution to be used on a street, where planting trees is impossible due to a large amount of underground communications. The size and construction of the planters are preventing the ground from freezing, therefore the trees can survive the cold Russian winter and don't need to be replaced each year.

## CROSSING



A pedestrian crossing is underlined by paving in order to indicate the pedestrian priority over cars. It also refers to the history of the street denoting a bridge over the river. The pedestrian crossings are also equipped with a system of steel tactile indicators simplifying navigation for blind and visually impaired.

## PAVING



Designing the paving pattern the architects were inspired by the artist Ellsworth Kelly. The pixel image is simultaneously a work of public art and a navigation tool.

## HISTORICAL PAVING



A small discovered part of historical pavement from 1880s is preserved as a fragment. It will serve as a "window to historical Moscow" which lets pedestrians feel the cultural heritage of the street.