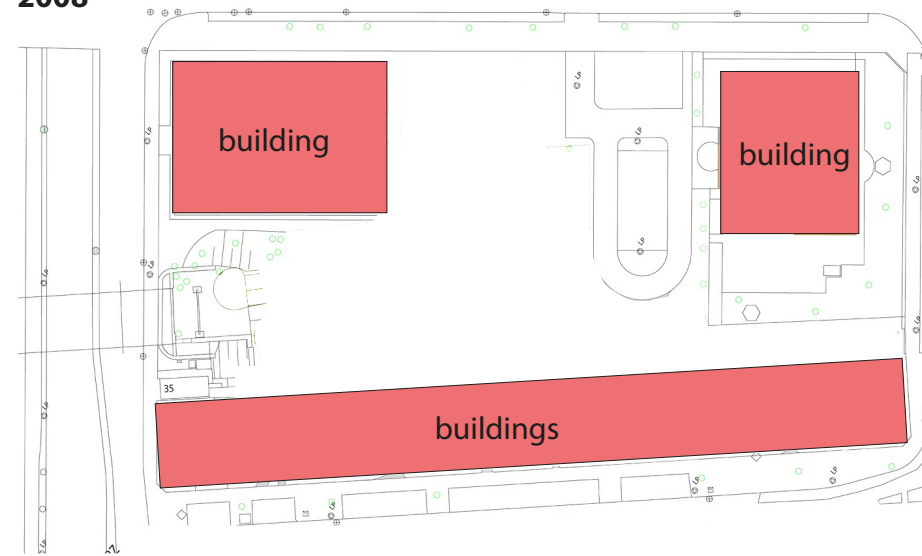


# The Hefpark - Adaptable Community Park Rotterdam

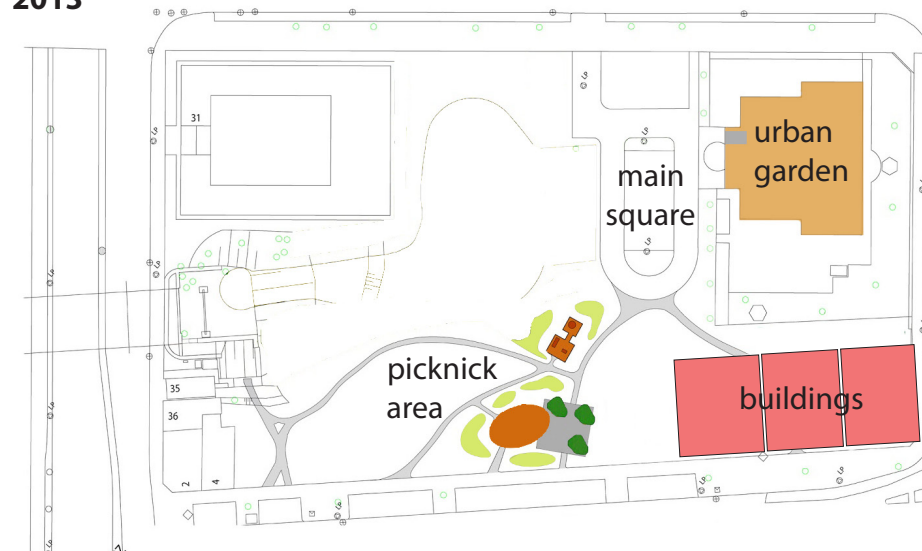
## 1) Location

### Development of the Park

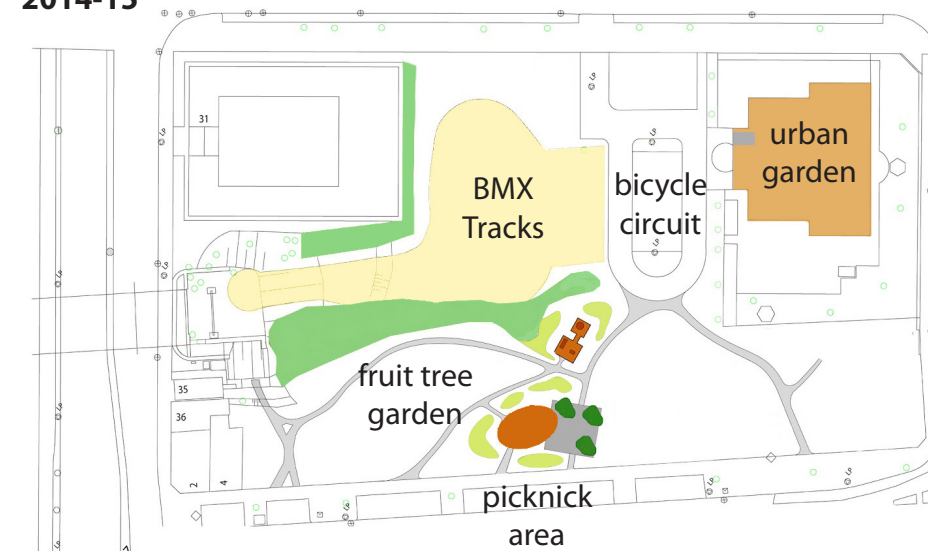
2008



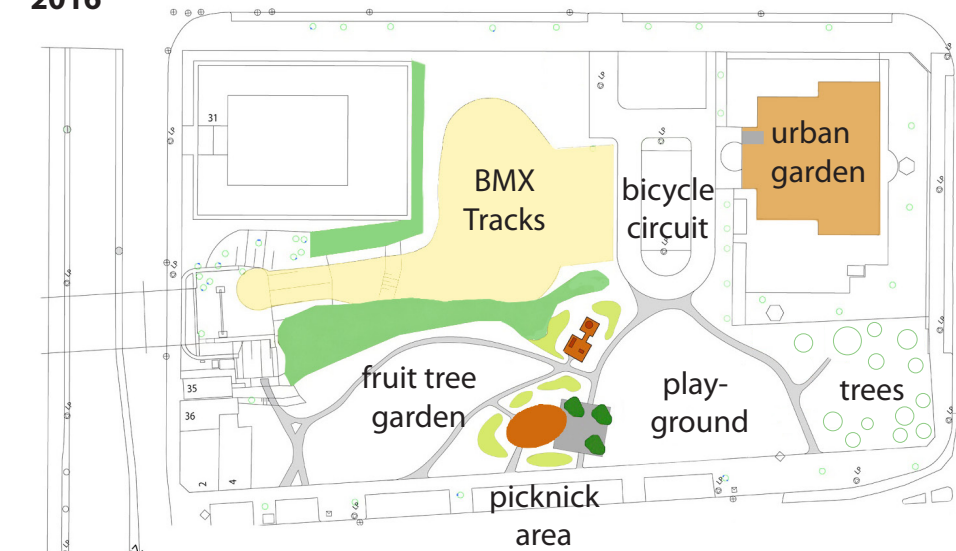
2013



2014-15



2016

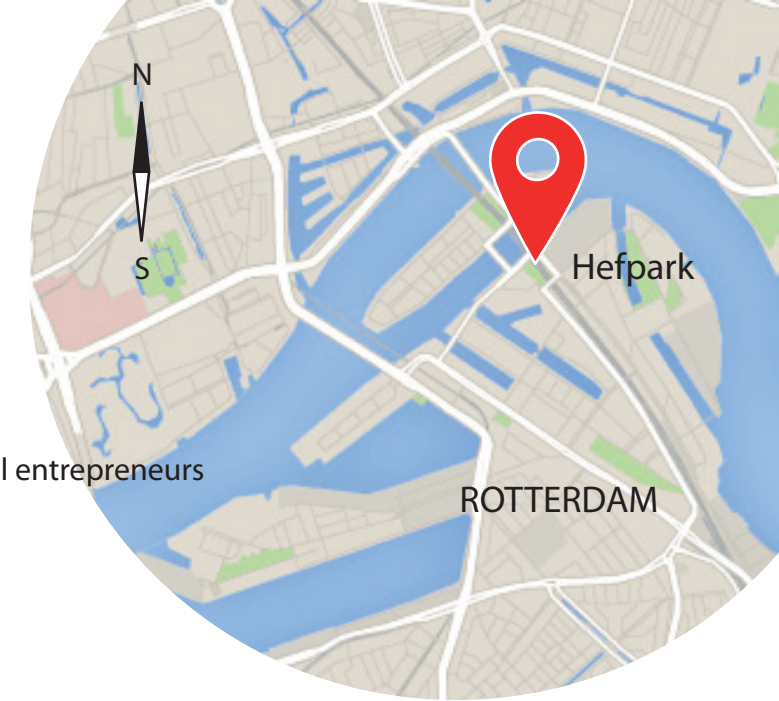


### Data about the park

- 2011 Start of the initiative by the community and local social entrepreneurs
- 2012, November Start of Hefpark
- 2013, July Construction of the garden begins
- 2013, November Placing of the seating furniture by Studio Bas Sala
- 2014, March Beginning of establishing the BMX dirt track
- 2014, Juni Opening of the BMX dirt track
- 2015 „Let it Grow“, programmatic plan plays the central role
- Future There is still enough space for inquiries to change and adapt the park to prospective needs and wishes of the neighbourhood (e.g. playground...)

### Facts about the park

- The park is a place of development that is constantly adapted to the resident's needs
- Important was to not thoroughly structure the park right from the beginning but to leave white spaces, that are filled in bit by bit as the park evolves
- The park is a community project, which is implemented and designed in close cooperation with residents, local schools and experts



**Studio Bas Sala**

Zomerhofstraat 78, 3032 CM Rotterdam  
T.: +31 10 477 2 790 E.: info@bassala.com  
www.bassala.com